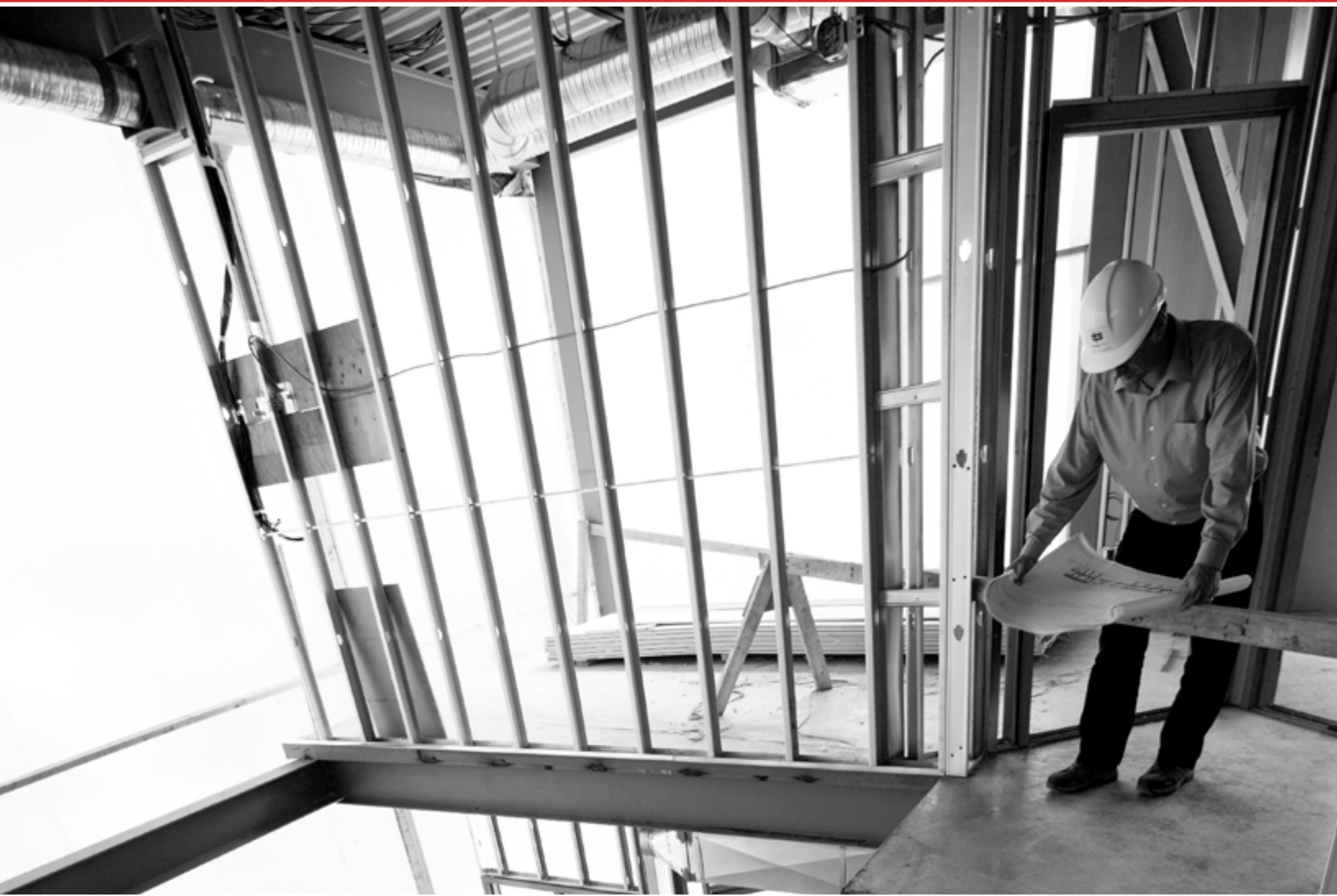




PABCO® Gypsum

what the job demands™



Submittal Book

CONTACT INFORMATION

PABCO® Gypsum is a division of PABCO® building products, LLC
PO Box 419074
Rancho Cordova, CA 95741
Technical Services: 866-282-9298
www.PABCOgypsum.com

WE'RE ALWAYS HERE TO HELP

PABCO® Gypsum prides itself on the unsurpassed expertise that we offer our customers: architects, engineers, contractors, distributors and owners. Our team of experts are available to answer your questions and assist in the selection of the right product for your project.

TECHNICAL SERVICES

We are here for you. At PABCO® Gypsum, technical support is one of the most important services we provide to the building community. Our technical services team is staffed by some of the most experienced professionals in the field. From selecting the right product for the job to proper installation questions, our expertise is always available to you.

PABCO® Technical Support by phone 866-282-9298
By Email techservices@paccoast.com

QuietRock® Technical Support by phone 800-797-8159
By Email info@QuietRock.com

SALES TEAMS

PABCO® Gypsum and its QuietRock® product division have a sales organization of inside and outside sales professionals that are focused on your success.

Gypsum products
Sales Support by phone 877-449-7786
By Email info@PABCOgypsum.com
On the Web www.PABCOgypsum.com

QuietRock® acoustical products
Sales Support by phone 800-797-8159
By Email info@QuietRock.com
On the Web www.QuietRock.com

Table of Contents

GENERAL INFORMATION

Legal Notices & Warranty information	4
Gypsum Products List	7
Sustainable Materials Datasheet	9

SUBMITTAL FORMS

PABCO LITECORE® Submittal	13
FLAME CURB® Submittal	15
SOUND CURB® Submittal	17
PABCORE® Shaftliner Submittal	19
Interior Ceiling Submittal	21
Regular Submittal	23
PABCO GLASS® INTERIOR Submittal	25
PABCO GLASS® Sheathing Submittal	27
PABCO GLASS® Shaftliner Submittal	29
Gypsum Sheathing Submittal	31
Exterior Soffit Submittal	33
MOLD CURB® Plus Submittal	35
ABUSE CURB® Submittal	37
PABCO Impact Resistant Submittal	39

QUIETROCK® PRODUCTS & ACCESSORIES

QuietRock® ES Overview	47
QuietRock® 510 Datasheet	49
QuietRock® ES Datasheet	51
QuietRock® ES Mold Resistant Datasheet	53
QuietRock® 530 Datasheet	55
QuietRock® 545 Datasheet	57
QuietSeal® Pro Datasheet	59
QuietPutty® Datasheet	60
QuietCoat® Datasheet	61

Legal Notices & Warranty Information

LIMITED WARRANTY:

PABCO® Building Products, LLC, warrants that on the date the gypsum board is shipped from its manufacturing plant the gypsum board is free from defects in materials and manufacture. **NOTWITHSTANDING THE FOREGOING, IT IS THE RESPONSIBILITY OF THE GYPSUM BOARD APPLICATOR TO NOTIFY PABCO® BUILDING PRODUCTS, LLC, IN WRITING WITHIN TWENTY FOUR (24) HOURS OF DISCOVERY OF ANY VISIBLY DEFECTIVE GYPSUM BOARD PRIOR TO SUCH VISIBLY DEFECTIVE GYPSUM BOARD BEING APPLIED; FAILURE TO DO SO MAY FURTHER LIMIT OR VOID THE RESPONSIBILITIES OF PABCO® BUILDING PRODUCTS, LLC, UNDER THIS WARRANTY.** This warranty will remain in place for one year from the date of shipment from the manufacturing plant. **THIS EXPRESS WARRANTY IS THE EXCLUSIVE WARRANTY PROVIDED BY PABCO® BUILDING PRODUCTS, LLC, AND SUPERSEDES ANY PRIOR, CONTRARY OR ADDITIONAL REPRESENTATIONS, WHETHER ORAL OR WRITTEN. PABCO® BUILDING PRODUCTS, LLC, HEREBY DISCLAIMS AND EXCLUDES ALL OTHER WARRANTIES – WHETHER EXPRESS, IMPLIED, OR STATUTORY – INCLUDING ANY WARRANTY OF MERCHANTABILITY, ANY WARRANTY OF FITNESS FOR A PARTICULAR PURPOSE, AND ANY IMPLIED WARRANTIES OTHERWISE ARISING FROM COURSE OF DEALING OR USAGE OF TRADE.**

If the gypsum board fails to conform to the foregoing warranty in Paragraph 1 and such nonconformity is not due to misuse or improper maintenance or storage, Buyer shall notify PABCO® Building Products, LLC, in writing, and within 60 days of discovery, PABCO® Building Products, LLC, shall provide, at its sole and absolute discretion, one of the following: (i) repair or replacement of any nonconforming or defective gypsum wallboard; or (ii) credit or full refund of the purchase price. THIS REMEDY SHALL BE THE EXCLUSIVE AND SOLE REMEDY OF BUYER FOR ANY BREACH OF WARRANTY.

IN NO EVENT SHALL PABCO® BUILDING PRODUCTS, LLC, BE LIABLE FOR ANY INCIDENTAL, SPECIAL, INDIRECT, OR CONSEQUENTIAL DAMAGES, WHETHER RESULTING FROM NONDELIVERY OR FROM THE USE, MISUSE, OR INABILITY TO USE THE PRODUCT OR FROM DEFECTS IN THE PRODUCT OR FROM NEGLIGENCE OR OTHER TORT. This exclusion applies regardless of whether such damages are sought for breach of warranty, breach of contract, negligence, or strict liability in tort or under any other legal theory.

TRADEMARKS:

The following trademarks used herein are owned by Pacific Coast Building Products and licensed to PABCO® Gypsum: PABCO®, what the job demands™, PABCO LITECORE®, FLAME CURB®, ABUSE CURB®, WATER CURB®, PABCORE®, PABCO GLASS®, MOLD CURB® Plus, Quality to the Core®, QuietRock®, EZ-SNAP™, QuietPutty®, QuietSeal® Pro, QuietGlue® Pro, QuietCoat®, QuietSeam® and Quiet®.

PRODUCT AVAILABILITY:

Products described herein may not be available in all geographic markets. Special lengths may be available on a special order basis. Consult your PABCO® Gypsum sales representative for information.

CURRENT UPDATED INFORMATION:

Additional and updated information is available on our websites: www.PABCOgypsum.com and www.QuietRock.com. The information in this publication may change without notice.

The PABCO® Gypsum Story

More than 60 years has passed since Fred Anderson opened a small lumber yard in Sacramento, California. The small business that he launched on a shoestring grew to a billion-dollar-a-year building materials enterprise. Fred Anderson had a vision:

"Listen to your customers, determine their needs and how you can serve them better, and expand the business to do that as opportunities present themselves."

An opportunity presented itself in 1972 with the purchase of an idle gypsum wallboard plant in Newark, California - the birth of PABCO® Gypsum. As demand grew, so did our aspirations and in 1977 PABCO® expanded into Las Vegas, Nevada with the acquisition of an existing gypsum wallboard plant. This time located on over four thousand acres that included a gypsum ore processing facility and extensive deposits of gypsum. PABCO® Gypsum has become an integral part of Fred Anderson's legacy known today as Pacific Coast Building Products, Inc. comprised of 75 distribution, manufacturing and contracting facilities in 11 states with over three thousand employees.

**"We run the company like a family.
Our business is built on relationships.
That is what distinguishes us from
our competition"**

David J. Lucchetti

President and Chief Executive Officer,
Pacific Coast Building Products, Inc.

Family owned and operated from the very beginning, PABCO® Gypsum has been providing quality gypsum wallboard products and superior customer service throughout North America. After multiple expansions and modernizations, PABCO's two facilities supply over 1.65 billion square feet of gypsum boards to all types of building projects every year.

The Las Vegas, Nevada gypsum manufacturing and mining operation is the cornerstone to PABCO's dedication to quality. Our quality begins from the ground up, literally. Due to the unique placement of our gypsum deposits, PABCO® re-engineered the method of extracting the ore from the ground and loading it directly into our wallboard manufacturing facility. Our ore is extracted, processed, refined and turned into salable gypsum panels all within our 4,200 acre footprint under the watchful eyes of some of the most tenured gypsum professionals in the country.

As a family concerned with the future, PABCO® Gypsum adopted practices throughout its operations to minimize its impact on our environment. This is achieved by reducing and reusing waste, manage water consumption and using alternative energy in its production facility. Our focus on sustainable manufacturing contributed to the recognition of our Las Vegas plant as the 2008 World Wallboard Plant of the Year by the Global Gypsum Conference.

To ensure finishing quality and consistency, the face and backing paper is manufactured within the family by PABCO® Paper, located in Vernon, California. Using only recycled materials, PABCO® Paper produces a wide variety of paper for our wallboard products as well as maintaining a link to its lineage dating back to 1919 as a manufacturer of folding cartons.

PABCO's latest acquisition adds the award winning QuietRock® sound damped wallboard and its complete line of accessories to the family. With manufacturing located in Newark, California adjacent to PABCO's existing wallboard plant, the QuietRock® product line is a natural complement to the over 40 year history of wallboard products that helped build the western United States.

With roots firmly established in our first generation of products: FLAME CURB®, ABUSE CURB® and MOLD CURB® Plus. PABCO® looks to the next generation of specialty gypsum products that include PABCO LITECORE® dual-use, sag-resistant, noncombustible core lightweight gypsum board for walls and ceilings, PABCO GLASS® Exterior Sheathing and PABCO GLASS® Shaftliner. With its distinctive orange glass mat wrap, you will know that PABCO® is protecting your building long before it begins protecting the people inside. PABCO GLASS® products feature a proprietary fire-resistant, mold-resistant and water-resistant core with glass fibers to increase its resilience.

PABCO's experienced sales and technical services teams are ready to assist you in the selection of PABCO® Gypsum products and solutions for your next project.

if you can dream it we can help build it

At PABCO® Gypsum we believe quality and craftsmanship make a difference in your projects. Our extensive product portfolio and exemplary customer service make PABCO Gypsum the natural choice since 1972. From QuietRock® sound damped drywall to PABCO GLASS™ Exterior Sheathing to PABCO LITECORE®, we have a solution for your needs.

Our experienced technical sales team is ready to assist you in the selection of PABCO® Gypsum products and solutions to make your dreams a built reality.



www.PABCOgypsum.com

PABCO® Gypsum technical services:

866.282.9298

QuietRock® acoustical products:

800.797.8159

Quality Gypsum Products

Specific data for products listed below is available on their respective individual Specification and Submittal Sheets which are available on the PABCO® web site: www.PABCOgypsum.com. Other lengths and edge types may be available on a special order basis. Contact your local PABCO® representative, or call PABCO® Technical Services at **866-282-9298**.

Product	Core	Thickness	Width	Length ¹	Edge Type	ASTM Standard	UL Core Type
STANDARD GYPSUM PRODUCTS							
PABCO LITECORE® For walls and ceilings	LiteCore	1/2"	48"	8', 9', 10', 12'	Tapered	C1396	N/A
			54"	12'			
PABCO FLAME CURB® Fire resistant boards for walls and ceilings ²	Super C	1/2"	48"	8', 9', 10', 12'	Tapered	C1396	PG-C
	Type X	5/8"	48" & 54"	8', 9', 10', 12'	Tapered & Rounded	C1396	PG-11
	Type C	5/8"	48"	8', 9', 10', 12'	Tapered	C1396	Type C
	Type X	3/4"	48"	12'	Tapered	C1396	PG-13
PABCO SOUND CURB™ Extended Sound and fire resistance for ceiling applications	Type X	3/4"	48"	8', 10', 12'	Tapered	C1396	PG-13
PABCORE® SHAFTLINER Shaft and area separation walls	Type X	1"	24"	8', 10', 12'	Double Beveled	C1396	PG-10
PABCO® INTERIOR CEILING Sag resistant ceiling board	Regular	1/2"	48"	12', 14'	Tapered & Rounded	C1396	N/A
PABCO® REGULAR GYPSUM BOARD Interior gypsum board product with dimensional stability	Regular	1/4"	48"	8'	Tapered	C1396	N/A
	Regular	3/8"	48"	8'	Tapered	C1396	N/A
	Regular	1/2"	48"	8', 9', 10', 12', 14', 15'	Tapered	C1396	N/A
	Regular	1/2"	54"	10', 12'	Tapered	C1396	N/A
	FLEX	3/8"	48"	12'	Tapered	C1396	N/A
EXTERIOR AND EXPOSURE RESISTANT GYPSUM PRODUCTS							
PABCO GLASS® SHEATHING Exterior glass mat sheathing	Regular	1/2"	48"	8'	Square	C1177	N/A
	Type X	5/8"	48"	8'	Square	C1177	PGS-WRS
PABCO GLASS® INTERIOR Glass mat interior gypsum board	Regular	1/2"	48"	8', 12'	Tapered	C1658	N/A
PABCO GLASS® SHAFTLINER Exposure resistant glass mat shaftliner	Type X	1"	24"	8', 12'	Double Beveled	C1658	PG-10
PABCO® GYPSUM SHEATHING Water resistant substrate for exterior cladding	Type X	5/8"	48"	8', 12'	Square	C1396	PG-5WS
PABCO® EXTERIOR SOFFIT Sag resistant for ceiling applications on the underside of exterior soffits	Regular	1/2"	48"	12'	Tapered	C1396	N/A
	Super C	1/2"	48"	12'	Tapered	C1396	PG-C
	Type X	5/8"	48"	8', 12'	Tapered	C1396	PG-11
	Type C	5/8"	48"	8', 12'	Tapered	C1396	Type C
MOLD CURB® PLUS PRODUCT FAMILY							
PABCO MOLD CURB® PLUS Mold and water resistant	Regular	1/2"	48"	8', 12'	Tapered	C1396	N/A
	Type X	5/8"	48"	8', 12'	Tapered	C1396	PG-5W
PABCO ABUSE CURB® Abrasion, indentation, scuff, mold and water resistant	Type X	5/8"	48"	12' ^a	Tapered	C1629	PG-5W
PABCO® IMPACT RESISTANT Abrasion, impact, indentation, mold and water resistant	Type X	5/8"	48"	12'	Tapered	C1396	PG-5W

¹ Other lengths may be available on a special order basis. ² Round Edge is only available on FLAME CURB® 5/8" x 48" widths.



Featured Project: San Benito County Courthouse,
Hollister, CA

beyond LEED®

Our commitment to you and the environment

INTRODUCING RED: THE NEW GREEN

By adopting proper environmental practices, we at PABCO® Gypsum exhibit a commitment to minimize our impact on the environment. This is achieved by reducing and reusing waste, manage water consumption and using alternative energy sources.

LEED® (Leadership in Energy and Environmental Design) the green building certification system administered by the U.S. Green Building Council (USGBC) is an import component of the PABCO® Gypsum sustainability program. However our commitment to sustainable manufacturing and building practices began over a decade before the establishment of the USGBC.

Our Las Vegas, Nevada gypsum board manufacturing plant is an example of how wallboard manufacturing can be sustainable.

ENERGY SAVINGS

Located on our property in Las Vegas is a cogeneration natural gas electrical power plant feeding the Nevada power grid. The waste by-product heat from the turbines is diverted and recycled into our wallboard dryer. The use of this otherwise wasted energy saves millions of cubic feet of natural gas and significantly reduces green-house emissions polluting our planet.

TRANSPORTATION ENERGY SAVINGS

Our raw Gypsum ore is mined from our quarry adjacent to our plant, a mobile conveyor belt moves the ore from the quarry directly into processing. Unlike our competitors, we do not utilize fleets of trucks or ocean barges to get our raw materials into our facility. We are savings millions of gallons of fossil fuels and reducing the resulting green-house gas emissions from this simple process.

RECYCLING GYPSUM PANELS

We recycle both our in-house generated scrap and clean gypsum board scrap from new construction projects. Our Newark plant provides a waste diversion process that allows Bay Area contractors to bypass the landfill by bringing clean PABCO® panel scrap back to the plant. This scrap is processed into usable commodities for the agricultural community. Our Las Vegas plant processes internal waste by removing the paper from the core. The reclaimed gypsum is mixed with incoming ore to produce new PABCO® products that contain 10% recycled content.

RECYCLED PAPER

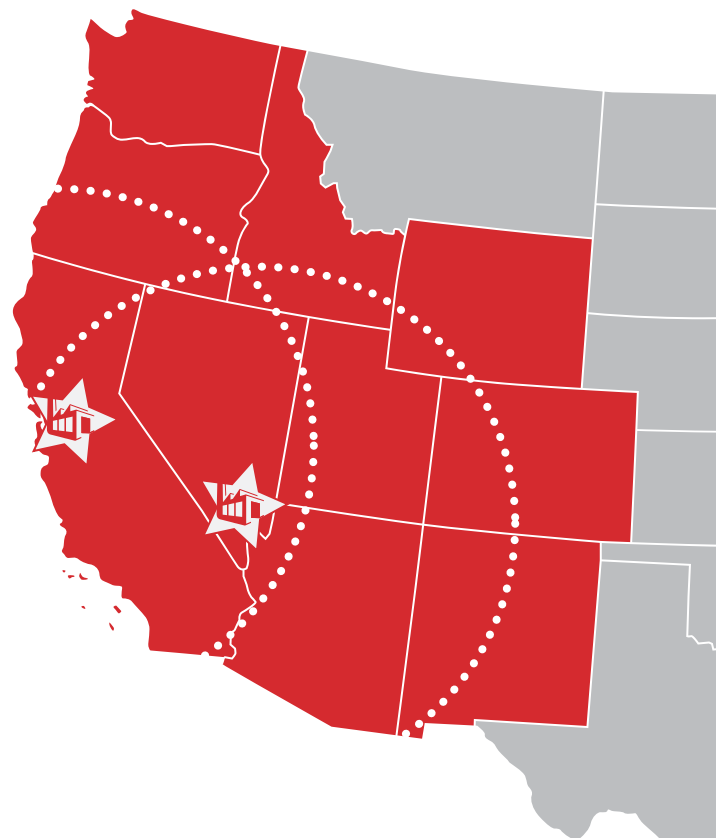
PABCO® Gypsum wallboard products are made with 100% recycled face and backing paper by our sister company PABCO® Paper located in Vernon, California.

RAIL TRANSPORTATION

PABCO® Gypsum utilized energy efficient rail transportation directly out of our plants in Las Vegas, NV and Newark, CA into our distribution locations throughout North America. Rail transportation is both economical and more environmentally conscious mode of delivery.

Our Las Vegas, NV manufacturing plant has the largest capacity in the western United States, employs sustainable features, and is committed to quality. There is no doubt why it was named World Wallboard Plant of the Year in 2008 by the Global Gypsum Conference.

LEED® is a trademark owned by the U.S. Green Building Council (USGBC)



Sustainable Materials

Datasheet

SUSTAINABLE FEATURES:

PABCO® Gypsum provides the following information for use in selecting materials to achieve LEED® certification credits. Gypsum board utilization credits may apply to specific construction projects under LEED® project designations:

- New Construction, Existing Buildings, Operations and Maintenance
- Core and Shell Development at Homes
- Schools

For each of the above project designation points available under MR4 (Recycled Content), and MR5 (Regional Materials) should be reviewed by the LEED AP on the project.

RECYCLED CONTENT (MR4):		PABCO® Gypsum Manufacturing Location	Post Consumer Content	Pre Consumer Content	Total Recycled Content	Raw Material Extraction Location
	Gypsum Board Products (paper faced)	Las Vegas, Nevada, USA	1%	9%	10%	Las Vegas, Nevada, USA
	PABCO GLASS® Products (glass mat faced)	Las Vegas, Nevada, USA	0%	0%	0%	Las Vegas, Nevada, USA
	QuietRock®	Newark, CA, USA	1%	9%	10%	Las Vegas, Nevada, USA

REGIONAL MATERIALS (MR5):		PABCO® Gypsum Manufacturing Plant Location	Regional Materials	Raw Material Extraction Location
	Gypsum Board Products (paper faced)	Las Vegas, NV, USA	95%	Las Vegas, NV, USA
		Newark, CA, USA	90%	Mexico
	PABCO GLASS® Products (glass mat faced)	Las Vegas, NV, USA	90%	Las Vegas, NV, USA
		Newark, CA, USA	90%	Mexico
	QuietRock®	Las Vegas, NV, USA	90%	Las Vegas, NV, USA

GREEN BUILDING RATING SYSTEM™

LEED® (Leadership in Energy and Environmental Design) is a voluntary, consensus based national rating system for developing high-performance, sustainable buildings. Developed by USGBC (United States Green Building Council), LEED® addresses all building types and emphasizes state-of-the-art strategies for sustainable site development, water savings, energy efficiency, materials and resources selection, and indoor environmental quality. LEED® is a practical rating tool for green building design and construction that provides immediate and measurable results for building owners and occupants.

ABOUT USGBC:

The U.S. Green Building Council (USGBC) is a non-profit organization committed to expanding sustainable building practices. USGBC is composed of more than 13,500 organizations from across the building industry that are working to advance structures that are environmentally responsible, profitable, and healthy places to live and work. Members includes building owners and end-users, real estate developers, facility managers, architects, designers, engineers, general contractors, subcontractors, product and building system manufacturers, government agencies, and nonprofits.

Submittal Forms

SUBMITTAL FORMS

PABCO LITECORE® Submittal	13
FLAME CURB® Submittal	15
Sound Curb® Submittal	17
PABCORE® Shaftliner Submittal	19
Interior Ceiling Submittal	21
Regular Submittal	23
PABCO GLASS® Sheathing Submittal	25
PABCO GLASS® Shaftliner Submittal	27
Gypsum Sheathing Submittal	29
Exterior Soffit Submittal	31
MOLD CURB® Plus Submittal	33
ABUSE CURB® Submittal	35
PABCO Impact Resistant Submittal	37



Featured Project: Vdara Hotel and Spa,
Las Vegas, NV

MANUFACTURER INFORMATION:

PABCO® Gypsum
a division of PABCO® building products, LLC
PO Box 419074
Rancho Cordova, CA 95741
Technical Services: 866-282-9298
www.PABCOgypsum.com

PABCO® Specification PGS-015
ASTM specification C 1396

DESCRIPTION:

LITECORE® is an interior sag-resistant gypsum board product with a proprietary non-combustible, dimensionally stable, gypsum core formulated to be lighter than original PABCO® Regular wallboard. Each panel is encased in 100% recycled paper on the face and back. The face paper is folded around the long edges to reinforce and protect the core; the ends are square cut and finished smooth. Long edges of panels are tapered providing a recessed area that allows joints to be reinforced and concealed with joint treatment creating a monolithic wall finish.

PRIMARY USES:

LITECORE® products are utilized in non-structural, non-fire rated wall, ceiling and partition applications, in new construction or renovation work, with framing spaced not more than 24-in o.c. while providing a decorating surface suitable to receive water-based texture or other decoration. Because it can be utilized on both walls and ceilings, the need for two different products is eliminated. This product may be formed to a curve with a short radius, and used as a covering material for flat or curved surfaces.

LIMITATIONS:

- LITECORE® panels are intended for interior applications with a maximum framing spacing of 24" o.c.
- Do not use this product where there will be direct exposure to water or continuous high humidity before, during, and/or after construction.

PABCO LITECORE®

Light-weight panel for walls & ceilings

- Gypsum panel products shall not be exposed to sustained temperatures exceeding 125° F (52° C).
- This product is non-structural, non-load bearing, and not to be used as a structural fastener base, or to support heavy wall or ceiling mounted objects. Installation to walls shall be with the bottom edge spaced a minimum of 1/4" inch (6 mm) above the floor. Insulation, when added, shall not exceed 2.2 lbs/sq. ft.

APPLICATION:

PABCO® Gypsum endorses and recommends the application specifications published in GA-216 (www.gypsum.org) and/or ASTM C 840 (www.astm.org). A combination of nails on the perimeters and screws in the field of panels is permitted with the spacing the same as described for each type fastener. PABCO® Gypsum Wallboard panels shall be "cut to fit" as closely as possible without forcing panels in place. Gypsum panel product joints shall be located so that no joint will occur within 12 in. of the corner of an opening unless control joints are to be installed at these locations. Temperature at time of panel application shall be above 40 °F and shall be maintained at 50 °F 48 hours prior to and during application and drying of joint compound. Special treatment of assemblies for additions such as control joints, resilient channel, insulation and perimeter relief systems shall be as specified in the tested system.

FIRE RESISTANT RATINGS:

Fire Resistance Rated Designs are promulgated from tests performed at IAS* certified independent testing laboratories, and these designs include specific materials assembled in a precise configuration. When choosing

construction details to achieve specific fire-resistance rated requirements, care must be taken to insure that each component of the specified assembly is the proper one specified in the referenced fire-resistance rated design, and assembled in accordance with the specific requirements of the assembly.

*The [International Accreditation Service](http://www.iasinc.org) — IAS — is a non-profit, public benefit corporation and a leading accreditation body in the United States. Internationally recognized, accreditation by IAS makes it easier to market products and services both inside and outside the United States.

STORAGE & HANDLING:

Store all PABCO® gypsum panels flat; do not store on edge as panels are heavy and may fall over causing injury or death. Store in an area that offers protection from adverse weather conditions, condensation, and other forms of moisture. Avoid job site conditions that expose gypsum board to water or moisture. Plastic shipping bags are temporary, and intended for protection during transit only, and must be removed promptly upon arrival. Store gypsum board under protected cover, off the ground with sufficient support to prevent sagging. Exercise proper care to avoid impact, scuffing of the glass faces, undue flexing, and damage to board edges, corners, and ends.

WARRANTIES & REMEDIES:

Current warranty information for this product is available online at www.PABCOgypsum.com.

continued on back

Job name:	
Contractor:	Date:

LEGAL NOTICES:

PABCO® Gypsum, the PABCO® logo, what the job demands™, and PABCO LITECORE® are trademarks or registered trademarks of Pacific Coast Building Products, Inc. and licensed to PABCO® Gypsum in the United States and other countries. Products described herein may not be available in all geographic markets. Consult your PABCO® Gypsum sales representative for information. Product features and Information subject to change without notice. Visit www.PABCOgypsum.com for product updates and current information.

PABCO LITECORE®

Light-weight panel for walls & ceilings

PRODUCT DATA, SIZES & TYPES:

Product	Thickness	Width	Length ¹	Edge Type	Weight ²	UL Core Type
LITECORE®	1/2" (12.7 mm)	48" (1219 mm)	8' (2438 mm), 9' (2743 mm), 10' (3048 mm), 12' (3658 mm)	Tapered	1.4 lbs/ft²	Regular
		54" (1372 mm)	12' (3658 mm)		1.6 lbs/ft²	

PACKAGING: 2 pieces per bundle, face-to-face, and end labeled.

¹Length availability may change; other lengths may be available on a special order basis. Consult with your local PABCO® representative

²Represents approximate weight for design and shipping purposes. A more exact weight may be available for your area; consult with your local PABCO® representative.

APPLICABLE STANDARDS & TECHNICAL DATA:

LITECORE® Thickness	1/2"
Manufacturing:	ASTM C 1396
Installation:	Gypsum Association GA-214, GA-216 – www.gypsum.org ASTM C 840 – www.astm.org
Surface Burning Characteristics (ASTM E 84):	Flame Spread 15; Smoke Developed 0
Combustibility (ASTM E 136):	Non-Combustible
Fire-Resistant Assemblies:	Gypsum Association GA-600, Fire Design Manual Underwriters Laboratories, UL Fire Resistance Directory
Flexural Strength, Load lbf (N) (ASTM C 473): Test Method B	
Perpendicular to substrate edge	107 lbf (476 N)
Parallel to substrate edge	36 lbf (160N)
Humidified deflection (ASTM C 473):	≤ 5/16"
Thermal resistance R value (ASTM C 518):	0.45
Composition:	100% recycled paper face, gypsum core
Material Safety Data Sheet MSDS:	MSDS available at www.PABCOgypsum.com , Technical Data
Foil Application:	Foil may be applied to the back of ASTM C 1396 gypsum wallboard for the purpose of complying with ASTM C 1396 paragraph 5.1.
PABCO® Gypsum literature:	"Construction Guide: Fire & Sound Rated Systems"
Recycled Content:	Refer to PABCO® Sustainable Materials Data Sheet for plant specific details.

Federal Specification SS-L-30D Type III & Type VII. The federal specification for gypsum board, SS-L-30d was withdrawn in 1984. It is provided here for informational purposes only. Note: Independent abuse testing performed by Intertek Testing Services.



NEED HELP WITH A PROJECT OR HAVE QUESTIONS ABOUT THIS PRODUCT?

Contact the PABCO® Gypsum Technical Services Team at **(866) 282-9298**.

ACHIEVE HIGH STC DESIGNS LIKE NEVER BEFORE WITH QUIETROCK!

Visit www.QuietRock.com or call **(800) 797-8159** to speak with a product specialist.

MANUFACTURER INFORMATION:

PABCO® Gypsum
a division of PABCO® building products, LLC
PO Box 419074
Rancho Cordova, CA 95741
Technical Services: 866-282-9298
www.PABCOgypsum.com

PABCO® Gypsum Specification PGS-002
ASTM specification C1396

DESCRIPTION:

The FLAME CURB® family of gypsum panel products is composed of a fire-resistant gypsum core, reinforced with glass fibers that provide increased strength and enhanced fire-resistant properties. The paper encasing the proprietary core is manufactured with 100% recycled paper and is folded around the long edges to reinforce in addition to protecting the core; the panel ends are cut square. The long panel edges are tapered, allowing a recessed joint area to be reinforced and concealed to create a monolithic surface suitable for decoration.

FLAME CURB® Type X meets or exceeds the requirements specified by ASTM under its gypsum board standard ASTM C1396 Type X.

1/2" FLAME CURB® Super 'C' is appropriate for applications requiring an enhanced fire resistance performance in a 1/2" gypsum panel. 5/8" FLAME CURB® Type C is appropriate for applications requiring the additional protection that allows single layer protection in ceiling applications. These enhanced products were developed with the addition of mineral additives integrated into the product's core to enhance the gypsum core's performance during the exposure to fire. For fire and sound rated systems it is important to consult the appropriate fire resistance directory or test report for specific components that are acceptable for use in the specific system. Systems using FLAME CURB® Type C or Super 'C' qualify for fire ratings up to 4 hours in walls, 3 hours in ceilings and 4 hours for column protection.

FLAME CURB® panels are "classified" by Underwriters Laboratories in accordance with ASTM E119 and UL 263.

PRIMARY USES:

FLAME CURB® products are non-structural gypsum panels intended for applications: such as interior walls, ceilings, beams, and columns in residential and commercial applications which often require specific fire-resistant assemblies. FLAME CURB® Type C is appropriate for applications requiring an enhanced fire resistance performance that exceeds the Type X core formulation in fire-resistive construction. Additional applications include use as a roof underlayment per GA-276. This product is designed for direct mechanical attachment to metal or wood framing members. With the wallboard joints properly treated per GA-216 and GA-214, FLAME CURB® products will resist the passage of smoke. FLAME CURB® products are suitable for use on generic designs listed in GA-600 and in the IBC 7.21.1(1,2,7,3) tables using FLAME CURB® products of the same thickness as required by the designs.

LIMITATIONS:

- Intended for interior applications, and shall not be used where there will be direct exposure to water or continuous high humidity before, during, and after construction.
- Non-load bearing
- Avoid exposure to temperatures exceeding 125-degree F (52 degree C) for an extended period of time.
- PABCO® FLAME CURB® is a non-structural panel, not to be used as a structural fastener base or to support wall or ceiling mounted objects.
- All materials used in conjunction with the application of FLAME CURB® Type C, or Super 'C' gypsum panels in fire or sound rated systems shall be installed as specified in the applicable test report.

FLAME CURB®

Type X, Type C, Super C

APPLICATION:

PABCO® Gypsum endorses the Gypsum Association's publications GA-214, GA-216 (www.gypsum.org) and ASTM Standard Specification C840 (www.astm.org) as its application and finishing specifications. The specifications provide detailed instructions on the standard application of gypsum panels and proper joint finishing procedures. For fire and sound rated systems it is important that you consult the appropriate fire resistance directory, manual or test report for complete assembly documentation and related information. These systems must be installed in strict compliance with the detailed fire test assembly description, including core types and other accessory components such as studs, fasteners spacing and fastener type and installed as tested. To qualify for listed sound ratings, special caulking, insulation or clips are generally added to the systems as detailed in the test report.

FIRE RESISTANT RATINGS:

Fire Resistance Rated Designs are promulgated from tests performed at IAS* certified independent testing laboratories, and these designs include specific materials assembled in a precise configuration. When choosing construction details to achieve specific fire-resistance rated requirements, care must be taken to ensure that each component of the specified assembly is as specified in the referenced fire-resistance rated design, and assembled in accordance with the specific requirements of the assembly.

*The [International Accreditation Service](http://www.iasinc.org) — IAS — is a non-profit, public benefit corporation and a leading accreditation body in the United States. Internationally recognized, accreditation by IAS makes it easier to market products and services both inside and outside the United States.

continued on back

Job name:	
Contractor:	Date:

STORAGE & HANDLING:

Store all PABCO® gypsum panels flat; do not store on edge as panels are heavy and may fall over causing injury or death. Store in an area that offers protection from adverse weather conditions, condensation, and other forms of moisture. Avoid job site conditions that expose gypsum board to water or moisture. Plastic shipping bags are temporary, and intended for protection during transit only, and must be removed promptly upon arrival. Store gypsum board under protected cover, off the ground with sufficient support to prevent sagging. Exercise proper care to avoid impact and/or scuffing of the glass faces, undue flexing, and damage to panel's edges, corners, and ends.

WARRANTIES & REMEDIES:

Current warranty information for this product is available online at www.PABCOgypsum.com.

LEGAL NOTICES:

PABCO® Gypsum, the PABCO® logo, what the job demands®, and FLAME CURB® are trademarks or registered trademarks of Pacific Coast Building Products, Inc. and licensed to PABCO® Gypsum in the United States and other countries. Products described herein may not be available in all geographic markets. Consult your PABCO® Gypsum sales representative for information. Product features and Information subject to change without notice. Visit www.PABCOgypsum.com for product updates and current information.

NEED HELP WITH A PROJECT OR HAVE QUESTIONS ABOUT THIS PRODUCT?

Contact the PABCO® Gypsum Technical Services Team at **(866) 282-9298**.

ACHIEVE HIGH STC DESIGNS LIKE NEVER BEFORE WITH QUIETROCK!

Visit www.QuietRock.com or call **(800) 797-8159** to speak with a product specialist.

FLAME CURB®

Type X, Type C, Super C

PRODUCT DATA, SIZES & TYPES:

Product	Thickness	Width	Length ¹	Edge Type	Weight ²	UL Core Type
Super C	1/2" (12.7 mm)	48" (1219 mm)	12' (3658 mm)	Tapered	2.0 lbs/ft ²	PG-C
Type X	5/8" (15.8 mm)	48" (1219 mm)	8' - 12' (2438 mm to 3658 mm)	Tapered, Round	2.2 lbs/ft ²	PG-11
Type X	5/8" (15.8 mm)	54" (1372 mm)	8' - 12' (2438 mm to 3658 mm)	Tapered	2.2 lbs/ft ²	PG-11
Type C	5/8" (15.8 mm)	48" (1219 mm)	12' (3658 mm)	Tapered	2.4 lbs/ft ²	TYPE C
Type X	3/4" (19.05 mm)	48" (1219 mm)	12' (3658 mm)	Tapered	3.0 lbs/ft ²	PG-13

PACKAGING: 2 pieces per bundle, face-to-face, and end labeled. 3/4" packaged as single panels stacked face up.

¹Length availability may change; other lengths may be available on a special order basis. Consult with your local PABCO® representative

²Represents approximate weight for design and shipping purposes. A more exact weight may be available for your area; consult with your local PABCO® representative.

APPLICABLE STANDARDS & TECHNICAL DATA:

FLAME CURB® Thickness	1/2"	5/8"	3/4"
Manufacturing:	ASTM C 1396		
Installation:	Gypsum Association GA-214, GA-216 – www.gypsum.org ASTM C 840 – www.astm.org		
Surface Burning Characteristics (ASTM E 84):	Flame Spread 15; Smoke Developed 0		
Combustibility (ASTM E 136):	Non-Combustible		
Fire-Resistant Assemblies:	Gypsum Association GA-600, Fire Design Manual Underwriters Laboratories, UL Fire Resistance Directory		
Permeance (perms; ng/Pa.s.m ²) (ASTM E 96):	> 1	> 1	> 1
Flexural Strength, Load lbf (N) (ASTM C 473): Test Method B			
Perpendicular to substrate edge	110 lbf (489 N)	147 lbf (654 N)	167 lbf (743 N)
Parallel to substrate edge	36 lbf (160 N)	46 lbf (205 N)	56 lbf (249 N)
Humidified deflection (ASTM C 473):	10/8" (32 mm)	5/8" (16 mm)	5/8" (16 mm)
Thermal resistance R value (ASTM C 518):	0.45	0.48	0.64
Composition:	100% recycled paper face, gypsum core		
Safety Data Sheet SDS:	SDS available at www.PABCOgypsum.com , Technical Data		
Foil Application:	Foil may be applied to the back of ASTM C 1396 gypsum wallboard for the purpose of complying with ASTM C 1396 paragraph 5.1.		
PABCO® Gypsum literature:	"Construction Guide: Fire & Sound Rated Systems"		
Recycled Content:	Refer to PABCO® Sustainable Materials Data Sheet for plant specific details.		

Federal Specification SS-L-30D Type III, Grade X. For Type C products should the Grade for the Federal Spec be "R". The federal specification for gypsum board, SS-L-30d was withdrawn in 1984. It is provided here for informational purposes only.



MANUFACTURER INFORMATION:

PABCO® Gypsum
a division of PABCO® building products, LLC
PO Box 419074
Rancho Cordova, CA 95741
Technical Services: 866-282-9298
www.PABCOgypsum.com

PABCO® Gypsum Specification PGS-020
ASTM specification C1396

DESCRIPTION:

SOUND CURB™ panels with Quiet® core gypsum technology are engineered to reduce sound transmission in floor/ceiling applications. SOUND CURB™ panels are ideal for most multi-level residential or light-commercial projects where fire resistance is a primary objective and where additional mass is desired for improved Sound Transmission Class (STC) and Impact Insulation Class (IIC) performance, especially in lower frequencies where sound control is proven difficult.

The proprietary, high-density, gypsum core is reinforced with glass fibers for added strength and fire-resistance. The paper encasing the proprietary core is manufactured with 100% recycled paper and is folded around the long edges to reinforce in addition to protecting the core; the panel ends are cut square. The long panel edges are tapered, allowing a recessed joint area to be reinforced and concealed to create a monolithic surface suitable for decoration.

3/4" SOUND CURB™ meets or exceeds the requirements specified by ASTM under its gypsum board standard ASTM C 1396 Type X.

This product was developed with the addition of mineral additives integrated into the product's core to enhance the gypsum core's performance during exposure to fire. For fire and sound rated systems, it is important to consult the appropriate fire resistance directory or test report for specific components that are acceptable for use in the specific system.

SOUND CURB™ Type X is "classified" by Underwriters Laboratories in accordance with ASTM E119 and UL 263.

PRIMARY USES:

SOUND CURB™ products are non-laminated, non-structural gypsum panels intended for interior ceilings and partition walls in residential and commercial applications which often require specific fire-resistant assemblies. SOUND CURB™ Type X is appropriate for applications requiring high density panels for the control of low frequency sound transmission especially structurally transmitted sound through floors in multi-story structures. SOUND CURB™ panels used with acoustically damped floor systems will achieve significant sound reduction. UL Designs L592, L598, M519 and M537 are typical systems. SOUND CURB™ applied with the wallboard joints properly treated per GA-216 and GA-214 will resist the passage of smoke.

LIMITATIONS:

- Intended for interior applications, and shall not be used where there will be direct exposure to water or continuous high humidity before, during, and after construction.
- Non-load bearing
- Avoid exposure to temperatures exceeding 125-degree F (52-degree C) for extended periods.
- SOUND CURB™ is a non- structural panel, not to be used as a structural fastener base or to support wall or ceiling mounted objects.
- All materials used in conjunction with the application of SOUND CURB™ Type X gypsum panels in Fire or Sound Rated systems shall be installed as specified in the applicable test report.

SOUND CURB™

Type X

APPLICATION:

PABCO® Gypsum endorses the Gypsum Association's publication GA-214, GA-216 (www.gypsum.org) and ASTM Standard Specification C840 (www.astm.org) as its application and finishing specifications. The specifications provide detailed instructions on the standard application of wallboard panels and proper joint finishing procedures. For fire and sound rated systems, it is important that you consult the appropriate fire resistance directory or test report for the complete assembly documentation and related information. These systems must be installed in strict compliance with the detailed fire test assembly description, including core types and other components such as studs, fastener spacing and fasteners type and installed as tested. To qualify for listed sound ratings, special caulking, insulation or clips are generally added to the systems as detailed in the test report.

FIRE RESISTANT RATINGS:

Fire Resistance Rated Designs are promulgated from tests performed at IAS* certified independent testing laboratories, and these designs include specific materials assembled in a precise configuration. When choosing construction details to achieve specific fire-resistance rated requirements, care must be taken to ensure that each component of the specified assembly is as specified in the referenced fire-resistance rated design, and assembled in accordance with the specific requirements of the assembly.

*The [International Accreditation Service](http://www.iasinc.org) — IAS — is a non-profit, public benefit corporation and a leading accreditation body in the United States. Internationally recognized, accreditation by IAS makes it easier to market products and services both inside and outside the United States.

continued on back

Job name:	
Contractor:	Date:

SOUND CURB™

Type X

STORAGE & HANDLING:

Store all PABCO® gypsum panels flat; do not store on edge as panels are heavy and may fall over causing injury or death. Store in an area that offers protection from adverse weather conditions, condensation, and other forms of moisture. Avoid job site conditions that expose gypsum board to water or moisture. Plastic shipping bags are temporary, and intended for protection during transit only, and must be removed promptly upon arrival. Store gypsum board under protected cover, off the ground with sufficient support to prevent sagging. Exercise proper care to avoid impact and/or scuffing of the glass faces, undue flexing, and damage to panel's edges, corners, and ends.

WARRANTIES & REMEDIES:

Current warranty information for this product is available online at www.PABCOgypsum.com.

LEGAL NOTICES:

PABCO® Gypsum, the PABCO® logo, what the job demands™, SOUND CURB™, and Quiet® are trademarks or registered trademarks of Pacific Coast Building Products, Inc. and licensed to PABCO® Gypsum in the United States and other countries. Products described herein may not be available in all geographic markets. Consult your PABCO® Gypsum sales representative for information. Product features and information subject to change without notice. Visit www.PABCOgypsum.com for product updates and current information.

NEED HELP WITH A PROJECT OR HAVE QUESTIONS ABOUT THIS PRODUCT?

Contact the PABCO® Gypsum Technical Services Team at **(866) 282-9298**.

ACHIEVE HIGH STC DESIGNS LIKE NEVER BEFORE WITH QUIETROCK!

Visit www.QuietRock.com or call **(800) 797-8159** to speak with a product specialist.

PRODUCT DATA, SIZES & TYPES:

Product	Thickness	Width	Length ¹	Edge Type	Weight ²	UL Core Type
Type X	3/4" (19.05 mm)	48" (1219 mm)	-	Tapered	3.1 lbs/ft ²	PG-13

PACKAGING: 3/4" packaged as single panels stacked face up.

¹Length availability may change; other lengths may be available on a special order basis. Consult with your local PABCO® representative

²Represents approximate weight for design and shipping purposes. A more exact weight may be available for your area; consult with your local PABCO® representative.

APPLICABLE STANDARDS & TECHNICAL DATA:

FLAME CURB® Thickness	3/4"
Manufacturing:	ASTM C 1396
Installation:	Gypsum Association GA-214, GA-216 – www.gypsum.org ASTM C 840 – www.astm.org
Surface Burning Characteristics (ASTM E 84):	Flame Spread 15; Smoke Developed 0
Combustibility (ASTM E 136):	Non-Combustible
Fire-Resistant Assemblies:	Gypsum Association GA-600, Fire Design Manual Underwriters Laboratories, UL Fire Resistance Directory
Permeance (perms; ng/Pa.s.m ²) (ASTM E 96):	> 1
Flexural Strength, Load lbf (N) (ASTM C 473): Test Method B	
Perpendicular to substrate edge	167 lbf (743 N)
Parallel to substrate edge	56 lbf (249 N)
Humidified deflection (ASTM C 473):	5/8" (16 mm)
Thermal resistance R value (ASTM C 518):	0.64
Composition:	100% recycled paper face, gypsum core
Safety Data Sheet SDS:	SDS available at www.PABCOgypsum.com , Technical Data
Foil Application:	Foil may be applied to the back of ASTM C 1396 gypsum wallboard for the purpose of complying with ASTM C 1396 paragraph 5.1.
PABCO® Gypsum literature:	"Construction Guide: Fire & Sound Rated Systems"
Recycled Content:	Refer to PABCO® Sustainable Materials Data Sheet for plant specific details.

Federal Specification SS-L-30D Type III, Grade X. For Type C products should the Grade for the Federal Spec be "R". The federal specification for gypsum board, SS-L-30d was withdrawn in 1984. It is provided here for informational purposes only.



MANUFACTURER INFORMATION:

PABCO® Gypsum
a division of PABCO® building products, LLC
PO Box 419074
Rancho Cordova, CA 95741
Technical Services: 866-282-9298
www.PABCOgypsum.com

PABCO® Specification PGS-007
ASTM specification C1396

DESCRIPTION:

PABCORE® SHAFTLINER Type X panels are manufactured with a proprietary fire resistant Type X core which has been reinforced with glass fibers and specialty additives to increase its fire-resistance. This core is encased in 100% recycled water-resistant face and back paper, and features a double beveled edge for ease of installation. PABCORE® SHAFTLINER Type X is distinguishable by the light green coloration of the water-resistant paper facing. PABCORE® SHAFTLINER Type X is "classified" by Underwriters Laboratories in accordance with ASTM E119.

PRIMARY USES:

PABCORE® SHAFTLINER Type X panels may be used in one and two-hour shaftwall/Stairwell systems, one and two-hour horizontal corridor ceiling systems and two-hour Area Separation Walls. Refer to the PABCO® Gypsum Shaftwall Systems publication for details.

PABCORE® SHAFTLINER Type X panels are designed for lining elevator, ventilation, and utility shafts, as well as constructing lightweight sound attenuation fire-resistant cavity shaft walls, and area separation fire walls in multifamily dwellings such as townhouses, condominiums, and apartments. These panels are key components in PABCO® Shaftwall/Stairwell and Area Separation Fire Wall (ASFW) Systems utilizing C-H, C-T Studs or H-Studs. PABCO® Shaftwall Systems are easy to erect, achieving fire-resistance ratings of one and two hours. Both solid and cavity-type area separation walls provide Sound Transmission Class (STC) ratings that exceed model building code requirements with designs that achieve STC ratings in excess

PABCORE® SHAFTLINER

Type X

of 60. Area Separation Fire Wall assemblies are light weight, weighing no more than 10 lbs/ft² when constructed. As a result, the need for costly footings or foundation modifications are often eliminated. Due to the relatively light weight panels, they can be installed up to four (4) stories in height.

When used as an area separation wall, the system must be:

- Continuous from the foundation to the underside of the protected roof sheathing or continue through the roof to form a parapet.
- Designed to allow for collapse of the construction on the side of the wall exposed to fire without collapse of the area separation fire wall.

LIMITATIONS:

- Shaftwall/Stairwell systems are designed as non-load bearing. (NLB)
- Do not install in areas which will be adjacent to occupancies of unusually high moisture conditions.
- Where penetrations occur in the assembly, additional reinforcement at corners may be required to distribute stress; approved flexible sealant/caulking may be required to seal around some penetrations.
- Through penetrations are not allowed in area separation fire walls that are designed to collapse on the fire side.
- Not recommended for use as an unlined HVAC supply shaft or duct.
- Limiting heights and deflection criteria must be based upon the metal stud manufacturer's recommendations.

APPLICATION:

PABCO® Gypsum endorses and recommends the application specifications published in GA-

216 (www.gypsum.org) and/or ASTM C840 (www.astm.org).

FIRE RESISTANT RATINGS:

Fire Resistance Rated Designs are promulgated from tests performed at IAS* certified independent testing laboratories, and these designs include specific materials assembled in a precise configuration. When choosing construction details to achieve specific fire-resistance rated requirements, care must be taken to insure that each component of the specified assembly is the proper one specified in the referenced fire-resistance rated design, and assembled in accordance with the specific requirements of the assembly.

*The [International Accreditation Service](http://www.iasinc.org) — IAS — is a non-profit, public benefit corporation and a leading accreditation body in the United States. Internationally recognized, accreditation by IAS makes it easier to market products and services both inside and outside the United States.

STORAGE & HANDLING:

Store all PABCO® gypsum panels flat; do not store on edge as panels are heavy and may fall over causing injury or death. Store in an area that offers protection from adverse weather conditions, condensation, and other forms of moisture. Avoid job site conditions that expose gypsum board to water or moisture. Plastic shipping bags are temporary, and intended for protection during transit only, and must be removed promptly upon arrival. Store gypsum board under protected cover, off the ground with sufficient support to prevent sagging. Exercise proper care to avoid impact, scuffing of the glass faces, undue flexing, and damage to board edges, corners, and ends.

continued on back

Job name:	
Contractor:	Date:

WARRANTIES & REMEDIES:

Current warranty information for this product is available online at www.PABCOgypsum.com.

LEGAL NOTICES:

PABCO® Gypsum, the PABCO® logo, what the job demands™, and PABCORE® are trademarks or registered trademarks of Pacific Coast Building Products, Inc. and licensed to PABCO® Gypsum in the United States and other countries. Products described herein may not be available in all geographic markets. Consult your PABCO® Gypsum sales representative for information. Product features and Information subject to change without notice. Visit www.PABCOgypsum.com for product updates and current information.

PABCORE® SHAFTLINER

Type X

PRODUCT DATA, SIZES & TYPES:

Product	Thickness	Width	Length ¹	Edge Type	Weight ²	UL Core Type
PABCORE® SHAFTLINER	1" (25.4 mm)	24" (610 mm)	8' (2438 mm)	Double Beveled	4.0 lbs/ft ²	PG-10
			10' (3048 mm)			
			12' (3658 mm)			

PACKAGING: Stacked & Palletized

Markings: PABCORE® SHAFTLINER products are certified by a third-party inspection service. Each panel bears the Underwriters Laboratories, Inc. label to indicate certification of fire resistance, surface burning characteristics, and non-combustibility.

¹ Length availability may change; other lengths may be available on a special order basis. Consult with your local PABCO® representative

² Represents approximate weight for design and shipping purposes. A more exact weight may be available for your area; consult with your local PABCO® representative.

APPLICABLE STANDARDS & TECHNICAL DATA:

PABCORE® SHAFTLINER Thickness	1"
Manufacturing:	ASTM C1396
Installation:	Gypsum Association GA-216 – www.gypsum.org ASTM C840 – www.astm.org
Surface Burning Characteristics (ASTM E84):	Flame Spread 15; Smoke Developed 0
Combustibility (ASTM E136):	Non-Combustible
Fire-Resistant Assemblies:	Gypsum Association GA-600, Fire Design Manual Underwriters Laboratories, UL Fire Resistance Directory
Flexural Strength, Load lbf (N) (ASTM C473): Test Method B	
Perpendicular to substrate edge	228 lbf (1014 N)
Parallel to substrate edge	77 lbf (343 N)
Thermal resistance R value (ASTM C518):	0.83
Composition:	100% recycled paper face, gypsum core
Material Safety Data Sheet MSDS:	MSDS available at www.PABCOgypsum.com , Technical Data
PABCO® Gypsum literature:	"Construction Guide: Fire & Sound Rated Systems"
Recycled Content:	Refer to PABCO® Sustainable Materials Data Sheet for plant specific details.

Federal Specification SS-L-30D Type VI, Grade X. The federal specification for gypsum board, SS-L-30d was withdrawn in 1984. It is provided here for informational purposes only.



NEED HELP WITH A PROJECT OR HAVE QUESTIONS ABOUT THIS PRODUCT?

Contact the PABCO® Gypsum Technical Services Team at (866) 282-9298.

ACHIEVE HIGH STC DESIGNS LIKE NEVER BEFORE WITH QUIETROCK®!

Visit www.QuietRock.com or call (800) 797-8159 to speak with a product specialist.

MANUFACTURER INFORMATION:

PABCO® Gypsum
a division of PABCO® building products, LLC
PO Box 419074
Rancho Cordova, CA 95741
Technical Services: 866-282-9298
www.PABCOgypsum.com

PABCO® Specification PGS-006
ASTM specification C1396

DESCRIPTION:

PABCO® Interior Ceiling Board was specifically developed with a sag-resistant gypsum core that will allow for the application of a water-based texture material on a 1/2" ceiling application where the ceiling joists are installed on 24" on-center framing. PABCO® Interior Ceiling Board is manufactured with a dimensionally stable, noncombustible fire-resistant gypsum core that includes additional specific additives that significantly reduces the potential for ceiling sag. This ceiling board product is then encased in 100% recycled paper and the face paper is folded around the long edges to reinforce in addition to protect the core. The panels long edges are tapered, allowing a recessed joint area to be reinforced and concealed to create a monolithic wall or ceiling surface suitable for decorating. The panel ends are cut square and finished smooth.

PABCO® Interior Ceiling Board is available in 1/2" thickness, 4' wide, 12' and 14' long panels, with tapered edges. A round edge profile is available to meet specific joint treatment requirements.

PRIMARY USES:

PABCO® Interior Ceiling Board is intended for use in a non-rated residential ceiling application in new construction or renovation work where the ceiling framing members are spaced at a maximum of 24" o.c. and contractors intend to use a water-based texture as the ceiling decoration.

LIMITATIONS:

- Maximum spacing between ceiling supports not to exceed 24" on center.
- PABCO® Interior Ceiling Board is intended for interior applications only, and shall not be used where there will be direct exposure to water or continuous high humidity before, during, and after construction.
- Avoid exposure to temperatures exceeding 125° F (52° C) for an extended period of time.
- PABCO® Interior Ceiling Board is a non-structural panel, not to be used as a structural fastener base or to support heavy wall or ceiling mounted objects.
- PABCO® Interior Ceiling Board shall be primed and sealed with a high-solids latex primer before the application of texture, or before final decoration. Adequate ventilation is necessary when applying texture to this product.
- Insulation weight must not exceed 2 lbs/sf.

APPLICATION:

Panels shall be applied perpendicular to ceiling framing 24" on center maximum. PABCO® Gypsum endorses and recommends the application specifications published in GA-216 (www.gypsum.org) and/or ASTM C840 (www.astm.org).

FIRE RESISTANT RATINGS:

Fire Resistance Rated Designs are promulgated from tests performed at IAS* certified independent testing laboratories, and these designs include specific materials assembled in a precise configuration. When choosing construction details to achieve specific fire-resistance rated requirements, care must be

INTERIOR CEILING

Sag-Resistant Ceiling Panel

taken to insure that each component of the specified assembly is the proper one specified in the referenced fire-resistance rated design, and assembled in accordance with the specific requirements of the assembly.

*The [International Accreditation Service](http://www.iasinc.org) — IAS — is a non-profit, public benefit corporation and a leading accreditation body in the United States. Internationally recognized, accreditation by IAS makes it easier to market products and services both inside and outside the United States.

STORAGE & HANDLING:

Store all PABCO® gypsum panels flat; do not store on edge as panels are heavy and may fall over causing injury or death. Store in an area that offers protection from adverse weather conditions, condensation, and other forms of moisture. Avoid job site conditions that expose gypsum board to water or moisture. Plastic shipping bags are temporary, and intended for protection during transit only, and must be removed promptly upon arrival. Store gypsum board under protected cover, off the ground with sufficient support to prevent sagging. Exercise proper care to avoid impact, scuffing of the glass faces, undue flexing, and damage to board edges, corners, and ends.

WARRANTIES & REMEDIES:

Current warranty information for this product is available online at www.PABCOgypsum.com.

continued on back

Job name:	
Contractor:	Date:

LEGAL NOTICES:

PABCO® Gypsum, the PABCO® logo, and what the job demands™ are trademarks or registered trademarks of Pacific Coast Building Products, Inc. and licensed to PABCO® Gypsum in the United States and other countries. Products described herein may not be available in all geographic markets. Consult your PABCO® Gypsum sales representative for information. Product features and information subject to change without notice. Visit www.PABCOgypsum.com for product updates and current information.

INTERIOR CEILING

Sag-Resistant Ceiling Panel

PRODUCT DATA, SIZES & TYPES:

Product	Thickness	Width	Length ¹	Edge Type	Weight ²	UL Core Type
PABCO® Interior Ceiling Board	1/2" (12.7 mm)	48" (1219 mm)	12' (3658 mm), 14' (4267 mm)	Tapered, Round	1.6 lbs/ft²	N/A

PACKAGING: 2 pieces per bundle, face-to-face, and end labeled.

¹ Length availability may change; other lengths may be available on a special order basis. Consult with your local PABCO® representative

² Represents approximate weight for design and shipping purposes. A more exact weight may be available for your area; consult with your local PABCO® representative.

APPLICABLE STANDARDS & TECHNICAL DATA:

PABCO® Interior Ceiling Board Thickness	1/2"
Manufacturing:	ASTM C 1396, C1395, C475, C840
Installation:	Gypsum Association GA-214, GA-216 – www.gypsum.org ASTM C840 – www.astm.org
Surface Burning Characteristics (ASTM E84):	Flame Spread 15; Smoke Developed 0
Combustibility (ASTM E136):	Non-Combustible
Fire-Resistant Assemblies:	Gypsum Association GA-600, Fire Design Manual Underwriters Laboratories, UL Fire Resistance Directory
Flexural Strength, Load lbf (N) (ASTM C473): Test Method B	
Perpendicular to substrate edge	107 lbf (476 N)
Parallel to substrate edge	36 lbf (160 N)
Humidified deflection (ASTM C473):	≤ 5/16" (8mm)
Thermal resistance R value (ASTM C518):	0.45
Composition:	100% recycled paper face, gypsum core
Material Safety Data Sheet MSDS:	MSDS available at www.PABCOgypsum.com , Technical Data
ICC:	ESR-1338
PABCO® Gypsum literature:	"Construction Guide: Fire & Sound Rated Systems"
Recycled Content:	Refer to PABCO® Sustainable Materials Data Sheet for plant specific details.

Federal Specification SS-L-30D Type III. The federal specification for gypsum board, SS-L-30D was withdrawn in 1984. It is provided here for informational purposes only.



NEED HELP WITH A PROJECT OR HAVE QUESTIONS ABOUT THIS PRODUCT?

Contact the PABCO® Gypsum Technical Services Team at (866) 282-9298.

ACHIEVE HIGH STC DESIGNS LIKE NEVER BEFORE WITH QUIETROCK®!

Visit www.QuietRock.com or call (800) 797-8159 to speak with a product specialist.

MANUFACTURER INFORMATION:

PABCO® Gypsum
a division of PABCO® building products, LLC
PO Box 419074
Rancho Cordova, CA 95741
Technical Services: 866-282-9298
www.PABCOgypsum.com

PABCO® Gypsum Specification PGS-001
ASTM specification C1396

DESCRIPTION:

PABCO® Regular interior gypsum panels are comprised of a dimensionally stable naturally fire-resistant gypsum core. Each panel is encased in a 100% recycled paper on the face and back sides. The face paper is folded around the long edges to reinforce and protect the core; the ends are square cut and finished smooth. The long edges of panels are tapered providing a recessed area that allows joints to be reinforced and concealed with joint treatment creating a monolithic decorating surface.

PABCO® Regular 1/2" panels are suitable for use on both walls and ceilings in non fire-resistance rated applications.

PRIMARY USES:

PABCO® REGULAR products are utilized in non-structural, non-fire rated wall, ceiling and partition applications, in new construction or renovation work, with framing spaced not more than 24" o.c. while providing a decorating surface suitable to receive water-based texture or other decoration.

Because PABCO® REGULAR 1/2" panels can be utilized on both walls and ceilings, the need for two different products is eliminated. These panels may be formed to a curve with a short radius, and used as a covering material for flat or curved surfaces.

LIMITATIONS:

- 1/2" PABCO® REGULAR panels are intended for interior applications with a maximum framing spacing of 24" o.c. Do not use this product where there will be direct exposure to water

or continuous high humidity before, during, and/or after construction.

- Gypsum panel products shall not be exposed to sustained temperatures exceeding 125° F (52° C).
- This product is non-structural, non-load bearing, and not to be used as a structural fastener base, or to support heavy wall or ceiling mounted objects. Installation to walls shall be with the bottom edge spaced a minimum of 1/4" inch (6 mm) above the floor. Insulation, when added above ceilings, shall not exceed 2.2 lbs/sq. ft.

APPLICATION:

PABCO® Gypsum endorses and recommends the application specifications published in GA-216 (www.gypsum.org) and/or ASTM C840 (www.astm.org) as well as the finishing specifications in GA-214. A combination of nails on the perimeters and screws in the field of panels is permitted with the spacing the same as described for each type fastener. PABCO® Gypsum panels shall be "cut to fit" as closely as possible without forcing panels in place. Gypsum panel product joints shall be located so that no joint will occur within 12 in. of the corner of an opening unless control joints are to be installed at these locations. Temperature at time of panel application shall be above 40 °F and shall be maintained at 50 °F 48 hours prior to and during application and drying of joint compound. Special treatment of assemblies for additions such as control joints, resilient channel, insulation and perimeter relief systems shall be as specified in the tested system.

FIRE RESISTANT RATINGS:

Fire Resistance Rated Designs are promulgated from tests performed at IAS* certified independent testing laboratories, and these designs include specific materials assembled

in a precise configuration. When choosing construction details to achieve specific fire-resistance rated requirements, care must be taken to insure that each component of the specified assembly is the proper one specified in the referenced fire-resistance rated design, and assembled in accordance with the specific requirements of the assembly.

*The [International Accreditation Service](http://www.iasinc.org) — IAS — is a non-profit, public benefit corporation and a leading accreditation body in the United States. Internationally recognized, accreditation by IAS makes it easier to market products and services both inside and outside the United States.

STORAGE & HANDLING:

- Store all PABCO® gypsum panels flat; do not store on edge as panels are heavy and may fall over causing injury or death.
- Store in an area that offers protection from adverse weather conditions, condensation, and other forms of moisture.
- Avoid job site conditions that expose gypsum board to water or moisture.
- Plastic shipping bags are temporary, and intended for protection during transit only, and must be removed promptly upon arrival.
- Store gypsum board under protected cover, off the ground with sufficient support to prevent sagging.
- Exercise proper care to avoid impact, scuffing of the glass faces, undue flexing, and damage to board edges, corners, and ends.

continued on back

Job name:	
Contractor:	Date:

WARRANTIES & REMEDIES:

Current warranty information for this product is available online at www.PABCOgypsum.com.

LEGAL NOTICES:

PABCO® Gypsum, the PABCO® logo, and what the job demands™ are trademarks or registered trademarks of Pacific Coast Building Products, Inc. and licensed to PABCO® Gypsum in the United States and other countries. Products described herein may not be available in all geographic markets. Consult your PABCO® Gypsum sales representative for information. Product features and Information subject to change without notice. Visit www.PABCOgypsum.com for product updates and current information.

PABCO® REGULAR

Gypsum panels for walls & ceilings

PRODUCT DATA, SIZES & TYPES:

Product	Thickness	Width	Length ¹	Edge Type	Weight ²
PABCO® Regular 1/4"	1/4" (6.4 mm)	48"	8' (2438 mm)	Tapered	1.0 lbs/ft ²
			12' (3658 mm)		
PABCO® Regular 3/8"	3/8" (9.5 mm)	48"	8' (2438 mm)	Tapered	1.3 lbs/ft ²
PABCO® Regular 1/2"	1/2" (12.7 mm)	48"	8'-12' (2438-3658 mm)	Tapered	1.5 lbs/ft ²
			14' (4267 mm)		
			15' (4572 mm)		
	1/2" (12.7 mm)	54"	10' (3048 mm) 12' (3658 mm)	Tapered	1.6 lbs/ft ²
PABCO® FLEX	3/8" (9.5 mm)	48"	12' (3658 mm)	Tapered	1.3 lbs/ft ²

PACKAGING: 2 pieces per bundle, face-to-face, and end labeled.

¹ Length availability may change; other lengths may be available on a special order basis. Consult with your local PABCO® representative

² Represents approximate weight for design and shipping purposes. A more exact weight may be available for your area; consult with your local PABCO® representative.

APPLICABLE STANDARDS & TECHNICAL DATA:

Regular Thickness	1/4"	3/8"	1/2"
Manufacturing:	ASTM C1396		
Installation:	Gypsum Association GA-216 – www.gypsum.org ASTM C840 – www.astm.org		
Surface Burning Characteristics (ASTM E84):	Flame Spread 15; Smoke Developed 0		
Combustibility (ASTM E136):	Non-Combustible		
Flexural Strength, Load lbf (N) (ASTM C473): Test Method B			
Perpendicular to substrate edge	46 lbf (205 N)	77 lbf (343 N)	107 lbf (476 N)
Parallel to substrate edge	16 lbf (71 N)	26 lbf (116 N)	36 lbf (160 N)
Humidified deflection (ASTM C473):	N/A	15/8-in (16 mm)	10/8-in (32 mm)
Thermal resistance R value (ASTM C518):	N/A	0.32	0.45
Composition:	Paper face, gypsum core		
Material Safety Data Sheet MSDS:	MSDS available at www.PABCOgypsum.com , Technical Data		
VOC Content:	None Detected (See Berkeley Analytical Certificate #150622-02)		
Foil Application:	Foil may be applied to the back of ASTM C1396 gypsum wallboard for the purpose of complying with ASTM C1396 paragraph 5.1.		
PABCO® Gypsum literature:	"Construction Guide: Fire & Sound Rated Systems"		
Recycled Content:	Refer to PABCO® Sustainable Materials Data Sheet for plant specific details.		

Federal Specification SS-L-30D Type III Grade R. The federal specification for gypsum board, SS-L-30d was withdrawn in 1984. It is provided here for informational purposes only.

NEED HELP WITH A PROJECT OR HAVE QUESTIONS ABOUT THIS PRODUCT?

Contact the PABCO® Gypsum Technical Services Team at **(866) 282-9298**.

ACHIEVE HIGH STC DESIGNS LIKE NEVER BEFORE WITH QUIETROCK!

Visit www.QuietRock.com or call **(800) 797-8159** to speak with a product specialist.



MANUFACTURER INFORMATION:

PABCO® Gypsum
a division of PABCO® building products, LLC
PO Box 419074
Rancho Cordova, CA 95741
Technical Services: 866-282-9298
www.PABCOgypsum.com

PABCO® Gypsum Specification PGS-017
ASTM specification C1396

DESCRIPTION

PABCO GLASS® Interior gypsum panels are composed of a proprietary gypsum core and glass mat face and back to provide extended mold- and water-resistance in moisture sensitive areas. The gypsum core is reinforced with glass fibers to increase overall core strength compared to regular gypsum board. The coated glass mats are dimensionally stable and resist warping, rippling, buckling and sagging due to fluctuations in temperature and/or humidity. These panels feature a tapered edge that allows for seamless finishing of interior partitions.

PRIMARY USES

PABCO GLASS® Interior gypsum panels are ideal for interior applications where moisture is a primary concern such as bathrooms, kitchens, laundry rooms and basements and may be used in tile backed areas where building codes allow. PABCO GLASS Interior gypsum panels may be used in pre-rock construction as the product's performance will not be compromised due to extended exposure up to 12 months during construction (see warranty information on pabco gypsum.com for complete details). It is recommended to refer to local building codes for specific restrictions pertaining to fire-resistance and application.

PABCO GLASS® Interior panels are available in 1/2" and 5/8" thicknesses. The 5/8" panels are suitable for fire-resistance rated applications listed on the UL R7094 Design Listing, GA File Numbers that specify the product or generic listings. The 1/2" panels are suitable for non-fire-resistance rated assemblies in accordance with building code requirements.

LIMITATIONS

- PABCO GLASS Interior is designed for mechanical attachment only to the wall framing using either nails or screws.
- Is not a structural product, and not a replacement for structurally engineered products requiring shear resistance.
- Intended for interior application or soffits in protected locations.
- Avoid sustained exposure to temperatures exceeding 125 deg. F (52 deg. C.).
- Avoid exposure to excessive, repetitive or continuous moisture before, during or after installation.
- Check with local code requirements for use as a tile backer
- Not suitable as a substrate for tile in wet areas such as tub and showers, gang showers, and other areas subject to direct water exposure.
- Use as a tile substrate is limited to tile installed according to current TCNA and ANSI specifications. Consult with adhesive and tile manufacturers for maximum size and weight parameters for use with gypsum panels.

INSTALLATION

PABCO® Gypsum endorses and recommends the application specifications published in GA-216, *Application and Finishing of Gypsum Panel Products* (www.gypsum.org) and ASTM C840, *Standard Specification for Application and Finishing of Gypsum Board* (www.astm.org) as well as the finishing specifications in GA-214 *Recommended Levels of Finish for Gypsum Board and Fiber-Reinforced Gypsum Panels*. PABCO® Gypsum panels shall be "cut to fit" as closely as possible without forcing panels in place. Gypsum panel product joints shall be located so that no joint will occur within 12 in. of the corner of an opening unless control joints are to be installed at these locations. PABCO GLASS® Interior will accept veneer plaster as a finishing application

PABCO GLASS® INTERIOR

Glass Mat Gypsum Board

when applied according to manufacturer's recommendations. Special treatment of assemblies for additions such as control joints, resilient channel, insulation and perimeter relief systems shall be as specified in the tested system or by the architect. Temperature at time of panel application shall be above 40 °F and shall be maintained at 50 °F 48 hours prior to and during application and drying of joint compound.

MOLD & WATER RESISTANCE

PABCO GLASS® Interior is engineered with special chemistries that provide enhanced water- and mold-resistant protection. The use of good design, with proper handling and construction practices, is the most effective and best method to minimize mold. This includes avoiding water exposure during all phases of the project, such as: storage, handling, shipping, installation and system maintenance both before and after project completion. In independent laboratory tests per ASTM D3273 *Standard Test Method for Resistance to Growth of Mold on the Resistance Surface of Interior Coatings in an Environmental Chamber*, PABCO GLASS® Interior products achieved a 10 rating, the highest level of performance for this test method. As no material may be classified as mold-proof, prolonged exposure to moisture may result in the growth of mold or mildew on any surface.

FIRE RESISTANT RATINGS

Fire Resistance Rated Designs are promulgated from tests performed at IAS** certified independent testing laboratories, and these designs include specific materials assembled in a precise configuration. When choosing construction details to achieve specific fire-resistance requirements, care must be taken to ensure that each component of the specified assembly is the proper one specified in the referenced fire-resistance rated design, and

continued on back

Job name:	
Contractor:	Date:

assembled in accordance with the specific requirements of the assembly.

**The [International Accreditation Service](#) — IAS — is a non-profit, public benefit corporation and a leading accreditation body in the United States. Internationally recognized, accreditation by IAS makes it easier to market products and services both inside and outside the United States.

STORAGE & HANDLING

Store all PABCO® gypsum panels flat; do not store on edge as panels are heavy and may fall over causing injury or death. Store in an area that offers protection from adverse weather conditions, condensation, and other forms of moisture. Avoid job site conditions that expose gypsum board to water or moisture. Plastic shipping bags are temporary, and intended for protection during transit only, and must be removed promptly upon arrival. Store gypsum board under protected cover, off the ground with sufficient support to prevent sagging. Exercise proper care to avoid impact and scuffing of the glass faces, undue flexing, and damage to board edges, corners, and ends.

WARRANTIES & REMEDIES

Current warranty information for this product is available online at www.PABCOgypsum.com.

LEGAL NOTICES

PABCO® Gypsum, the PABCO® logo, what the job demands®, and PABCO GLASS® are registered trademarks of Pacific Coast Building Products, Inc. and licensed to PABCO® Gypsum in the United States and other countries. Product features and Information subject to change without notice. Visit www.PABCOgypsum.com for product updates and current information.

PABCO GLASS® INTERIOR Glass Mat Gypsum Board

PRODUCT DATA, SIZES & TYPES

Product	Thickness	Width	Length ¹	Edge Type	Weight ²	UL Core Type
PABCO GLASS® Interior Regular	1/2" (12.7 mm)	48" (1219 mm)	8' (2438 mm)	Tapered	2.0 lbs/ft²	N/A
PABCO GLASS® Interior Type X	5/8" (15.8 mm)		12' (3658 mm)		2.5 lbs/ft²	PGI

PACKAGING

Stacked & palletized

¹ Length availability may change; other lengths may be available on a special order basis. Consult with your local PABCO® representative.

² Represents approximate weight for design and shipping purposes. A more exact weight may be available for your area; consult with your local PABCO® representative.

APPLICABLE STANDARDS & TECHNICAL DATA

PABCO GLASS® Interior Thickness	1/2"		5/8"	
Health & Wellness Properties				
VOC	Certified Low VOC emitting as tested per CDPH/EHLB/Standard Method V1.2 (Sect. 01350).			
Asbestos	USDI has tested factories, ingredients and products for the presence of asbestos. Each test series has shown asbestos to be non-detectable.			
Mold Resistance	Periodic product tests to ASTM D3273 are conducted. The test reports have shown a score of 10, the highest score possible. This indicates that there is no mold growth under the test conditions (28-day exposure).			
Physical Properties				
Surface Burning Characteristics (ASTM E84):	Flame Spread 0, Smoke Developed 0			
Combustibility (ASTM E136):	Non-Combustible			
Thermal resistance R value (ASTM C518):	0.42		0.53	
Permeance (perms; ng/Pa.s.m²) (ASTM E96):	>20			
Water absorption (ASTM C473):	<5%			
Flexural Strength, Load lbf (N) (ASTM C473): Test Method B				
Perpendicular to substrate edge	>100 lbf (445 N)		>140 lbf (623 N)	
Parallel to substrate edge	>80 lbf (356 N)		>100 lbf (445 N)	
Humidified deflection (ASTM C473):	<5/16 in (8 mm)		<4/16 in (6 mm)	
Composition:	Coated fiberglass mat, gypsum core			
Applicable Standards				
Manufacturing:	ASTM C1396 part 7, C1658			
Installation:	Gypsum Association GA-214, GA-216 – www.gypsum.org ASTM C840 – www.astm.org			
Safety Data Sheet SDS:	SDS available at www.PABCOgypsum.com/document-library			
PABCO® Gypsum literature:	www.PABCOgypsum.com/document-library			
Recycled Content:	Refer to PABCO® Sustainable Materials data for product and plant specific details.			



NEED HELP WITH A PROJECT OR HAVE QUESTIONS ABOUT THIS PRODUCT?

Contact the PABCO® Gypsum Technical Services Team at (866) 282-9298.

ACHIEVE HIGH STC DESIGNS LIKE NEVER BEFORE WITH QUIETROCK®!

Visit www.QuietRock.com or call (800) 797-8159 to speak with a product specialist.

MANUFACTURER INFORMATION:

PABCO® Gypsum
a division of PABCO® building products, LLC
PO Box 419074
Rancho Cordova, CA 95741
Technical Services: 866-282-9298
www.PABCOgypsum.com

PABCO® Gypsum Specification PGS-013
ASTM specification C 1177 Standard
Specification for Glass-Mat Gypsum Substrate
for Use as Sheathing

DESCRIPTION:

PABCO GLASS® Sheathing is comprised of a proprietary formula that provides a fire-resistant, mold-resistant and water-resistant gypsum core, that has been reinforced with glass fibers to increase its resilience. The product is encased in a mold-resistant coated fiberglass mat distinguishable by the orange colored fiberglass mat facer bearing the PABCO GLASS® Sheathing printing with a white colored fiberglass mat on the back of the panel. The coated glass mats are dimensionally stable and resists warping, rippling, buckling and sagging due to fluctuations in temperature and/or humidity. These panels feature a square edge formation with the ends cut square.

PRIMARY USES:

PABCO GLASS® Sheathing was developed for commercial and residential applications where the product's performance will not be compromised due to extended exposure (up to twelve (12) months) under normal weather conditions* during construction. This product can be used as a substrate for exterior claddings such as wood siding, shingles, panel siding, vinyl or metal siding, masonry or brick veneer, conventional cement-stucco systems and Exterior Insulation and Finish Systems (EIFS). It is recommended that cladding be mechanically attached through the Sheathing into the framing. Exterior claddings and their application methods shall be the responsibility of the cladding manufacturer. Consult the local building code when a water-resistive barrier or vapor retarder is required. PABCO GLASS® Sheathing is suitable

for preliminary work prior to building enclosure when exposure resistance is required.

*Normal weather conditions shall mean climatic normal weather with usual high and low temperatures, with occasional moderate rain and wind. Abnormal weather shall mean severe wind and/or rain, hail, cascading rain, earthquakes, tornadoes, hurricanes, floods, and similar or like conditions.

LIMITATIONS:

- Is designed for mechanical attachment only to the wall framing using either nails or screws.
- Construction of fire-resistance rated design assemblies shall be in accordance with the construction details specified in the referenced fire-resistance rated design. Do not use as a nailing base.
- Is not a finished surface, but a substrate that shall be covered by exterior wall cladding and is not intended for joint treatment or paint
- Is not a structural product, and not a replacement for structurally engineered Sheathing requiring shear resistance.
- Shall be properly flashed at openings and located so that no joint will align with an edge of the opening. Joints shall be staggered.
- Holes and cutouts for pipes or fixtures, or other small openings, shall be properly protected by means such as flashing or caulking.
- Check with local code for requirements for sealing horizontal joints.

APPLICATION:

PABCO GLASS® Sheathing is designed for mechanical attachment to the framing using nails or screws. PABCO GLASS® Sheathing shall be installed in accordance with the Gypsum Association publication GA-253 (www.gypsum.org) or ASTM C 1280 (www.astm.org).

PABCO GLASS® SHEATHING

Mold & Water Resistant

MOLD & WATER RESISTANCE:

PABCO GLASS® Sheathing has been engineered with special chemistries that provide enhanced water- and mold-resistant protection in gypsum panel products. In independent laboratory tests per ASTM D 3273 (Standard Test Method for Resistance to Growth of Mold on the Resistance Surface of Interior Coatings in an Environmental Chamber), PABCO GLASS® Sheathing products achieved a 10 rating, the highest level of performance for this test method. No material may be classified as mold-proof. Prolonged exposure to moisture can result in the growth of mold or mildew on any surface. The use of good design, with proper handling and construction practices, is the most effective and best method to minimize mold. This includes avoiding water exposure during all phases of the project, such as: storage, handling, shipping, and product installation and system maintenance both before and after project completion.

FIRE RESISTANT RATINGS:

Fire Resistance Rated Designs are promulgated from tests performed at IAS** certified independent testing laboratories, and these designs include specific materials assembled in a precise configuration. When choosing construction details to achieve specific fire-resistance rated requirements, care must be taken to insure that each component of the specified assembly is the proper one specified in the referenced fire-resistance rated design, and assembled in accordance with the specific requirements of the assembly.

**The [International Accreditation Service](http://www.iasinc.org) — IAS — is a non-profit, public benefit corporation and a leading accreditation body in the United States. Internationally recognized, accreditation by IAS makes it easier to market products and services both inside and outside the United States.

continued on back

Job name:	
Contractor:	Date:

STORAGE & HANDLING:

Store all PABCO® gypsum panels flat; do not store on edge as panels are heavy and may fall over causing injury or death. Store in an area that offers protection from adverse weather conditions, condensation, and other forms of moisture. Avoid job site conditions that expose gypsum board to water or moisture. Plastic shipping bags are temporary, and intended for protection during transit only, and must be removed promptly upon arrival. Store gypsum board under protected cover, off the ground with sufficient support to prevent sagging. Exercise proper care to avoid impact, scuffing of the glass faces, undue flexing, and damage to board edges, corners, and ends.

WARRANTIES & REMEDIES:

Current warranty information for this product is available online at www.PABCOgypsum.com.

LEGAL NOTICES:

PABCO® Gypsum, the PABCO® logo, what the job demands®, and PABCO GLASS® are trademarks or registered trademarks of Pacific Coast Building Products, Inc. and licensed to PABCO® Gypsum in the United States and other countries. Product features and Information subject to change without notice. Visit www.PABCOgypsum.com for product updates and current information.

PABCO GLASS® SHEATHING

Mold & Water Resistant

PRODUCT DATA, SIZES & TYPES:

Product	Thickness	Width	Length ¹	Edge Type	Weight ²	UL Core Type
PABCO GLASS® Sheathing Regular	1/2" (12.7 mm)	48" (1219 mm)	8' (2438 mm)	Square	2.0 lbs/ft²	N/A
PABCO GLASS® Sheathing Type X	5/8" (15.8 mm)				2.8 lbs/ft²	PGS-WRS

PACKAGING: Stacked & palletized

¹ Length availability may change; other lengths may be available on a special order basis. Consult with your local PABCO® representative

² Represents approximate weight for design and shipping purposes. A more exact weight may be available for your area; consult with your local PABCO® representative.

APPLICABLE STANDARDS & TECHNICAL DATA:

PABCO GLASS® Sheathing Thickness	1/2"	5/8"
Manufacturing:	ASTM C 1177	
Installation:	Gypsum Association GA-253, GA-254 – www.gypsum.org ASTM C 1280 – www.astm.org	
Mold Resistance (ASTM D 3273):	10 (highest rating)	
Surface Burning Characteristics (ASTM E 84):	Flame Spread 0; Smoke Developed 0	
Combustibility (ASTM E 136):	Non-Combustible	
Permeance (perms; ng/Pa.s.m²) (ASTM E 96):	19.9	11.9
Flexural Strength, Load lbf (N) (ASTM C 473): Test Method B		
Perpendicular to substrate edge	100 lbf (445 N)	140 lbf (623 N)
Parallel to substrate edge	80 lbf (356 N)	100 lbf (445 N)
Humidified deflection (ASTM C 473):	2/8-in (6 mm)	1/8" (3 mm)
Water absorption (ASTM C 473):	<10%	<10%
Compressive strength (psi minimum) (ASTM C 472):	400 psi	500 psi
Thermal resistance R value (ASTM C 518):	0.42	0.7
Composition:	Coated fiberglass mat, gypsum core	
Material Safety Data Sheet MSDS:	MSDS available at www.PABCOgypsum.com , Technical Data	
PABCO® Gypsum literature:	"Construction Guide: Fire & Sound Rated Systems"	
Recycled Content:	Refer to PABCO® Sustainable Materials Data Sheet for plant specific details.	

NEED HELP WITH A PROJECT OR HAVE QUESTIONS ABOUT THIS PRODUCT?

Contact the PABCO® Gypsum Technical Services Team at (866) 282-9298.

ACHIEVE HIGH STC DESIGNS LIKE NEVER BEFORE WITH QUIETROCK®!

Visit www.QuietRock.com or call (800) 797-8159 to speak with a product specialist.



MANUFACTURER INFORMATION:

PABCO® Gypsum
a division of PABCO® building products, LLC
PO Box 419074
Rancho Cordova, CA 95741
Technical Services: 866-282-9298
www.PABCOgypsum.com

PABCO® Gypsum Specification PGS-014
ASTM specification C 1658 Standard
Specification for Glass Mat Gypsum Panels

DESCRIPTION:

PABCO GLASS® SHAFTLINER was developed for commercial and multi-family applications where the product's performance will not be compromised due to extended exposure (up to 12 months) under normal weather conditions during construction. PABCO GLASS® SHAFTLINER is comprised of a proprietary formula which provides a fire resistant, mold-resistant, and water-resistant gypsum core that has been reinforced with glass fibers to increase its resilience. The product is encased in a coated fiberglass mat distinguishable by the orange colored fiberglass mat facer bearing the PABCO GLASS® SHAFTLINER printing with a white colored fiberglass mat on the back of the panel. The coated glass mats are dimensionally stable and resist warping, rippling, buckling and sagging resulting from fluctuations in temperature and/or humidity. These panels feature a double beveled edge formation for ease of installation with the ends cut square.

PRIMARY USES:

PABCO GLASS® SHAFTLINER is designed for use in lining elevator shafts, and constructing lightweight effective sound attenuation fire barriers for cavity shaft walls and area separation firewalls in multifamily housing. These panels are key components in CT-Stud Cavity Shaftwall Systems as well as H-Stud Area Separation Firewall Systems that are easy to erect with fire resistance ratings that easily achieve two hours. Both solid and cavity-type area separation walls can be constructed to achieve sound transmission class (STC) ratings that exceed model building code requirements. Specific wall

system designs achieve STC ratings in excess of 60.

LIMITATIONS:

- Shaftwall/Stairwell systems are designed as non-load bearing. (NLB)
- Do not install in areas which will be adjacent to occupancies of unusually high moisture conditions.
- Provide control joints so that maximum length of continuous wall is 30 feet. Wherever possible, the wall control joints should coincide with those of the building structure.
- Where penetrations occur in the assembly, additional reinforcement at corners may be required to distribute stresses; approved flexible sealant/caulking may be required to seal around penetrations.
- Not recommended for use as an unlined HVAC supply shaft or duct.
- Limiting heights and deflection criteria should be based upon the metal stud manufacturers' recommendations.

APPLICATION:

PABCO GLASS® SHAFTLINER shall be installed in accordance with the PABCO® Gypsum C-T Shaftwall Systems guide.

MOLD & WATER RESISTANCE:

PABCO GLASS® SHAFTLINER has been engineered with water-and-mold resistant chemistries that provide enhanced water- and-mold resistant protection available in gypsum panel products. In independent laboratory tests per ASTM D 3273 (Standard Test Method for Resistance to Growth of Mold on the Resistance Surface of Interior Coatings in an Environmental Chamber), PABCO GLASS® products scored 10, the highest level of performance for this test method. No material may be classified as mold-proof. Prolonged exposure to moisture can result

PABCO GLASS® SHAFTLINER

Mold & Water Resistant Type X

in mold and mildew growth on any surface. The use of good design, handling and construction practices are the most effective practices to manage mold and mildew. This involves avoiding water exposure during all phases of the project, such as: storage, handling and shipping in addition to product installation, both before and after project completion.

FIRE RESISTANT RATINGS:

Fire Resistance Rated Designs are promulgated from tests performed at IAS* certified independent testing laboratories, and these designs include specific materials assembled in a precise configuration. When choosing construction details to achieve specific fire-resistance rated requirements, care must be taken to insure that each component of the specified assembly is the proper one specified in the referenced fire-resistance rated design, and assembled in accordance with the specific requirements of the assembly.

The [International Accreditation Service — IAS](http://www.iasinc.org) — is a non-profit, public benefit corporation and a leading accreditation body in the United States. Internationally recognized, accreditation by IAS makes it easier to market products and services both inside and outside the United States.

STORAGE & HANDLING:

Store all PABCO® gypsum panels flat; do not store on edge as panels are heavy and may fall over causing injury or death. Store in an area that offers protection from adverse weather conditions, condensation, and other forms of moisture. Avoid job site conditions that expose gypsum board to water or moisture. Plastic shipping bags are temporary, and intended for protection during transit only, and must be removed promptly upon arrival. Store gypsum board under protected cover, off the ground with sufficient support to prevent sagging.

continued on back

Job name:	
Contractor:	Date:

Exercise proper care to avoid impact, scuffing of the glass faces, undue flexing, and damage to board edges, corners, and ends.

WARRANTIES & REMEDIES:

Current warranty information for this product is available online at www.PABCOgypsum.com.

LEGAL NOTICES:

PABCO® Gypsum, the PABCO® logo, what the job demands™, and PABCO GLASS® are trademarks or registered trademarks of Pacific Coast Building Products, Inc. and licensed to PABCO® Gypsum in the United States and other countries. Product features and Information subject to change without notice. Visit www.PABCOgypsum.com for product updates and current information.

PABCO GLASS® SHAFTLINER

Mold & Water Resistant Type X

PRODUCT DATA, SIZES & TYPES:

Product	Thickness	Width	Length ¹	Edge Type	Weight ²	UL Core Type
PABCO GLASS® Shaftliner	1" (25.4 mm)	24" (610 mm)	8' (2438 mm)	Double Beveled	4.1 lbs/ft²	PG-10
			12' (3658 mm)			

PACKAGING: Stacked & palletized

¹ Length availability may change; other lengths may be available on a special order basis. Consult with your local PABCO® representative

² Represents approximate weight for design and shipping purposes. A more exact weight may be available for your area; consult with your local PABCO® representative.

APPLICABLE STANDARDS & TECHNICAL DATA:

PABCO GLASS® Shaftliner Thickness	1"
Manufacturing:	ASTM C 1658
Installation:	PABCO GYPSUM C-T Shaftwall Systems Guide
Mold Resistance (ASTM D 3273):	10 (highest rating)
Surface Burning Characteristics (ASTM E 84):	Flame Spread 0; Smoke Developed 0
Combustibility (ASTM E 136):	Non-Combustible
Flexural Strength, Load lbf (N) (ASTM C 473): Test Method B	
Perpendicular to substrate edge	228 lbf (1014 N)
Parallel to substrate edge	77 lbf (343 N)
Water absorption (ASTM C 473):	<10%
Thermal resistance R value (ASTM C 518):	0.83
Composition:	Coated fiberglass mat, gypsum core
Material Safety Data Sheet MSDS:	MSDS available at www.PABCOgypsum.com , Technical Data
PABCO® Gypsum literature:	"Construction Guide: Fire & Sound Rated Systems"
Recycled Content:	Refer to PABCO® Sustainable Materials Data Sheet for plant specific details.



NEED HELP WITH A PROJECT OR HAVE QUESTIONS ABOUT THIS PRODUCT?

Contact the PABCO® Gypsum Technical Services Team at (866) 282-9298.

ACHIEVE HIGH STC DESIGNS LIKE NEVER BEFORE WITH QUIETROCK®!

Visit www.QuietRock.com or call (800) 797-8159 to speak with a product specialist.

MANUFACTURER INFORMATION:

PABCO® Gypsum
a division of PABCO® building products, LLC
PO Box 419074
Rancho Cordova, CA 95741
Technical Services: 866-282-9298
www.PABCOgypsum.com

PABCO® Gypsum Specification PGS-004
ASTM specification C 1396

DESCRIPTION:

PABCO® Gypsum Sheathing is a versatile, economical fire and water-resistant panel product that is used as a substrate for exterior veneer finishing systems on the exterior of residential and commercial structures. The core is encased in 100% recycled water-resistant paper facing that is distinguishable by the brown/black coloration on the front and the long edges. The face paper is folded along the long edges to reinforce and protect the core; the ends are square cut and finished smooth.

5/8" Type X Gypsum Sheathing is intended for use in select commercial applications that require fire-tested systems. This product exceeds the requirements specified by ASTM under its wallboard standard ASTM Type X.

PABCO® Gypsum Sheathing Type X is classified by Underwriters Laboratories in accordance with ASTM E 119.

PRIMARY USES:

PABCO® Type X Gypsum Sheathing can be used with virtually all exterior walls and cladding: including wood siding, shingles, panel siding, vinyl or metal siding, masonry or brick veneer, Portland cement stucco, and Exterior Insulated Finish Systems (EFIS). Mechanically attached exterior walls and cladding are attached through the sheathing into the wall framing. The performance of any Exterior Insulated Finish System that includes gypsum sheathing and recommendations for the proper method of attachment are the sole responsibility of the Exterior Insulated Finish System manufacturer."

GYPSUM SHEATHING

Water-Resistant

LIMITATIONS:

- Shall not be used on ceilings, soffits or sills.
- Is designed for mechanical attachment only to the outside surface of the exterior wall framing using either nails, screws or staples. Construction of fire resistive assemblies shall be in accordance with the construction details specified in the fire test report.
- Is a substrate that shall be covered by exterior wall cladding and is not intended for exposure exceeding 30 days. The gypsum sheathing board shall be covered immediately with a water-resistive barrier if exposure time will be extended or weather conditions become severe.
- Shall be covered with a water-resistive barrier, or horizontal joints shall be sealed; refer to the local building code for details. Where a water-resistive barrier is required, the water-resistive barrier shall be attached over the face of the gypsum sheathing, to the framing, with the upper layer lapped over the lower layer in accordance with the code. (See GA-253 Application of Gypsum Sheathing for complete details, www.gypsum.org).
- Shall be properly flashed at openings and located so that no joint will align with an edge of the opening. Joints shall be staggered.
- Holes and cutouts for pipes or fixtures, or other small openings, shall be properly protected by means such as flashing or caulking.

APPLICATION:

PABCO® Gypsum Sheathing is designed for mechanical attachment to the outside surface of exterior wall framing using either nails, screws or staples. PABCO® Gypsum endorses and recommends the application specifications published in GA-253 and GA-254 (www.gypsum.org) and/or ASTM C 1280 (www.astm.org).

FIRE RESISTANT RATINGS:

Fire Resistance Rated Designs are promulgated from tests performed at IAS* certified independent testing laboratories, and these designs include specific materials assembled in a precise configuration. When choosing construction details to achieve specific fire-resistance rated requirements, care must be taken to insure that each component of the specified assembly is the proper one specified in the referenced fire-resistance rated design, and assembled in accordance with the specific requirements of the assembly.

*The [International Accreditation Service](http://www.iasinc.org) — IAS — is a non-profit, public benefit corporation and a leading accreditation body in the United States. Internationally recognized, accreditation by IAS makes it easier to market products and services both inside and outside the United States.

STORAGE & HANDLING:

Store all PABCO® gypsum panels flat; do not store on edge as panels are heavy and may fall over causing injury or death. Store in an area that offers protection from adverse weather conditions, condensation, and other forms of moisture. Avoid job site conditions that expose gypsum board to water or moisture. Plastic shipping bags are temporary, and intended for protection during transit only, and must be removed promptly upon arrival. Store gypsum board under protected cover, off the ground with sufficient support to prevent sagging. Exercise proper care to avoid impact, scuffing of the glass faces, undue flexing, and damage to board edges, corners, and ends.

continued on back

Job name:	
Contractor:	Date:

WARRANTIES & REMEDIES:

Current warranty information for this product is available online at www.PABCOgypsum.com.

LEGAL NOTICES:

PABCO® Gypsum, the PABCO® logo, and what the job demands™ are trademarks or registered trademarks of Pacific Coast Building Products, Inc. and licensed to PABCO® Gypsum in the United States and other countries. Products described herein may not be available in all geographic markets. Consult your PABCO® Gypsum sales representative for information. Product features and Information subject to change without notice.

Visit www.PABCOgypsum.com for product updates and current information.

GYPSUM SHEATHING

Water-Resistant

PRODUCT DATA, SIZES & TYPES:

Product	Thickness	Width	Length ¹	Edge Type	Weight ²	UL Core Type
Gypsum Sheathing Type X	5/8" (15.8 mm)	48" (1219 mm)	8' (2438 mm) 12' (3658 mm)	Square	2.3 lbs/ft ²	PG-5WS

PACKAGING: 2 pieces per bundle, face-to-face, and end labeled.

¹ Length availability may change; other lengths may be available on a special order basis. Consult with your local PABCO® representative

² Represents approximate weight for design and shipping purposes. A more exact weight may be available for your area; consult with your local PABCO® representative.

APPLICABLE STANDARDS & TECHNICAL DATA:

PABCO® Gypsum Sheathing Thickness	5/8"
Manufacturing:	ASTM C 1396
Installation:	Gypsum Association GA-253, GA-254 – www.gypsum.org ASTM C 1280 – www.astm.org
Surface Burning Characteristics (ASTM E 84):	Flame Spread 15; Smoke Developed 0
Combustibility (ASTM E 136):	Non-Combustible
Fire-Resistant Assemblies:	Gypsum Association GA-600, Fire Design Manual Underwriters Laboratories, UL Fire Resistance Directory
Flexural Strength, Load lbf (N) (ASTM C 473): Test Method B	
Perpendicular to substrate edge	147 lbf (654 N)
Parallel to substrate edge	46 lbf (205 N)
Humidified deflection (ASTM C 473):	5/8-in
Water absorption (ASTM C 473):	≤10%
Thermal resistance R value (ASTM C 518):	0.48
Composition:	100% recycled paper face, gypsum core
Material Safety Data Sheet MSDS:	MSDS available at www.PABCOgypsum.com , Technical Data
Foil Application:	Foil may be applied to the back of ASTM C 1396 gypsum wallboard for the purpose of complying with ASTM C 1396 paragraph 5.1.
PABCO® Gypsum literature:	"Construction Guide: Fire & Sound Rated Systems"
Recycled Content:	Refer to PABCO® Sustainable Materials Data Sheet for plant specific details.

Federal Specification SS-L-30D Type II. The federal specification for gypsum board, SS-L-30d was withdrawn in 1984. It is provided here for informational purposes only.



NEED HELP WITH A PROJECT OR HAVE QUESTIONS ABOUT THIS PRODUCT?

Contact the PABCO® Gypsum Technical Services Team at (866) 282-9298.

ACHIEVE HIGH STC DESIGNS LIKE NEVER BEFORE WITH QUIETROCK®!

Visit www.QuietRock.com or call (800) 797-8159 to speak with a product specialist.

MANUFACTURER INFORMATION:

PABCO® Gypsum
a division of PABCO® building products, LLC
PO Box 419074
Rancho Cordova, CA 95741
Technical Services: 866-282-9298
www.PABCOgypsum.com

PABCO® Specification PGS-005
ASTM specification C 1396

DESCRIPTION:

PABCO® Exterior Gypsum Soffit Board is designed for use in an exterior ceiling application. The gypsum core has been formulated with additives that enhances its ability to resist sag. This specialty core is then encapsulated in a cream or light-brown treated moisture resistant face paper and a light-grey or light-brown back paper that further increases its resistance to moisture. The face paper is folded around the long edges to reinforce in addition to protect the core. The long panel edges are tapered allowing a recessed joint area to be reinforced and concealed to create a monolithic ceiling surface suitable for decoration. This product is designed for use in an exterior ceiling application, i.e. underside of exterior soffits; open porches; walkways; carport ceilings and similar installations that are completely protected from contact with water. This product is manufactured in the 1/2" Regular, 1/2" Super C, 5/8" Type X, and 5/8" Type C core formulations.

1/2" Exterior Soffit is available in the Regular and 1/2" Super C formulation and is intended for use as a single layer application primarily in residential construction

5/8" Exterior Soffit Type X is intended for use in select applications that require fire-tested systems. Exceeds the requirements specified by ASTM under its wallboard standard ASTM C 1396 Type X.

5/8" Exterior Soffit Type C is intended for use in select applications that require extended fire-tested systems. Exceeds the requirements

specified by ASTM under its wallboard standard ASTM C 1396 Type X.

Exterior Soffit Type X and Exterior Soffit Type C are classified by Underwriters Laboratories in accordance with ASTM E 119.

PRIMARY USES:

Exterior soffit board is designed to provide extra resistance to moisture and sagging required for exterior ceiling application in the out-door environment. It is typically used on exterior soffits and sheltered exterior ceilings such as open porches, walkways, carport ceilings and similar installations in commercial and residential construction with indirect exposure to environmental conditions. Type C is appropriate for applications requiring an extended fire resistance performance that exceeds the Type X "classified" core formulation in fire-resistive construction.

LIMITATIONS:

- PABCO® Exterior Gypsum Soffit Board shall not be subjected to direct exposure to weather, and water.
- 24" o.c. (on center) joist spacing is the maximum span for PABCO® Type X Exterior Gypsum Soffit Board.
- An approved exterior surface decoration (alkyd paint) must be applied to all exposed soffit board. (See ESR: 1338).
- All materials and application of PABCO® Type X Exterior Gypsum Soffit Board on fire rated assemblies shall be as indicated in the fire test report.
- PABCO® Exterior Gypsum Soffit Board Shall not be exposed to sustained temperatures exceeding 125° F (52° C).
- PABCO® Exterior Gypsum Soffit Board is non-

structural, and not to be used as a structural fastener base, or to support heavy wall or ceiling mounted objects.

APPLICATION:

Exterior Soffit Board panels are intended for direct attachment to wood framing or furring and to metal framing either by direct attachment or by suspended metal furring. Panels shall be applied perpendicular to ceiling joists, in a horizontal plane or inclined downward away from the structure in ceiling applications. Panels may be used as a covering on interior wall surfaces. All joints and fasteners not covered by exterior cladding or outer layers in a multi-layer system shall be finished with tape and joint compound. Unless protected by metal or other water stops, all edges of the soffit board shall be spaced a minimum of 1/4" away from adjacent vertical surfaces. Suitable fascia and molding shall be provided around the perimeter of the soffit or ceiling to protect the gypsum panels from direct exposure to water. All soffit board indirectly exposed shall be decorated with an approved exterior cladding or painting system. When PABCO® Type X Exterior Gypsum Soffit Board is specified for use in fire rated systems, the UL core type specified and the application method must be as specified in the fire tested system selected.

PABCO® Gypsum endorses and recommends the application specifications published in GA-216 (www.gypsum.org) and/or ASTM C 840 (www.astm.org).

FIRE RESISTANT RATINGS:

Fire Resistance Rated Designs are promulgated from tests performed at IAS* certified independent testing laboratories, and these designs include specific materials assembled

continued on back

Job name:	
Contractor:	Date:

in a precise configuration. When choosing construction details to achieve specific fire-resistance rated requirements, care must be taken to insure that each component of the specified assembly is the proper one specified in the referenced fire-resistance rated design, and assembled in accordance with the specific requirements of the assembly.

The [International Accreditation Service — IAS](#) — is a non-profit, public benefit corporation and a leading accreditation body in the United States. Internationally recognized, accreditation by IAS makes it easier to market products and services both inside and outside the United States.

STORAGE & HANDLING:

Store all PABCO® gypsum panels flat; do not store on edge as panels are heavy and may fall over causing injury or death. Store in an area that offers protection from adverse weather conditions, condensation, and other forms of moisture. Avoid job site conditions that expose gypsum board to water or moisture. Plastic shipping bags are temporary, and intended for protection during transit only, and must be removed promptly upon arrival. Store gypsum board under protected cover, off the ground with sufficient support to prevent sagging. Exercise proper care to avoid impact, scuffing of the glass faces, undue flexing, and damage to board edges, corners, and ends.

WARRANTIES & REMEDIES:

Current warranty information for this product is available online at www.PABCOgypsum.com.

LEGAL NOTICES:

PABCO® Gypsum, the PABCO® logo, and what the job demands™ are trademarks or registered trademarks of Pacific Coast Building Products, Inc. and licensed to PABCO® Gypsum in the United States and other countries. Products described herein may not be available in all geographic markets. Consult your PABCO® Gypsum sales representative for information. Product features and Information subject to change without notice. Visit www.PABCOgypsum.com for product updates and current information.

EXTERIOR SOFFIT

Regular, Type X, Type C, Super C

PRODUCT DATA, SIZES & TYPES:

Product	Thickness	Width	Length ¹	Edge Type	Weight ²	UL Core Type
Exterior Regular	1/2" (12.7 mm)	48" (1219 mm)	8' (2438 mm), 12' (3658 mm)	Tapered	1.7 lbs/ft ²	N/A
Exterior Soffit Super C	1/2" (15.8 mm)		8' (2438 mm), 12' (3658 mm)	Tapered	2.0 lbs/ft ²	PG-C
Exterior Soffit Type X	5/8" (15.8 mm)		8' (2438 mm), 12' (3658 mm)	Tapered	2.3 lbs/ft ²	PG-11
Exterior Soffit Type C	5/8" (15.8 mm)		8' (2438 mm), 12' (3658 mm)	Tapered	2.4 lbs/ft ²	Type C

PACKAGING: 2 pieces per bundle, face-to-face, and end labeled.

¹ Length availability may change; other lengths may be available on a special order basis. Consult with your local PABCO® representative

² Represents approximate weight for design and shipping purposes. A more exact weight may be available for your area; consult with your local PABCO® representative.

APPLICABLE STANDARDS & TECHNICAL DATA:

PABCO® EXTERIOR SOFFIT Thickness	1/2"	5/8"
Manufacturing:	ASTM C 1396	
Installation:	Gypsum Association GA-216 – www.gypsum.org ASTM C 840 – www.astm.org	
Surface Burning Characteristics (ASTM E 84):	Flame Spread 15; Smoke Developed 0	
Combustibility (ASTM E 136):	Non-Combustible	
Fire-Resistant Assemblies:	Gypsum Association GA-600, Fire Design Manual Underwriters Laboratories, UL Fire Resistance Directory	
Flexural Strength, Load lbf (N) (ASTM C 473): Test Method B		
Perpendicular to substrate edge	107 lbf (476 N)	147 lbf (160 N)
Parallel to substrate edge	36 lbf (160 N)	46 lbf (205 N)
Humidified deflection (ASTM C 473):	7/8-in (22 mm)	4/8-in (13 mm)
Thermal resistance R value (ASTM C 518):	0.45	0.48
Composition:	100% recycled paper face, gypsum core	
Material Safety Data Sheet MSDS:	MSDS available at www.PABCOgypsum.com , Technical Data	
Foil Application:	Foil may be applied to the back of ASTM C 1396 gypsum wallboard for the purpose of complying with ASTM C 1396 paragraph 5.1.	
PABCO® Gypsum literature:	"Construction Guide: Fire & Sound Rated Systems"	
Recycled Content:	Refer to PABCO® Sustainable Materials Data Sheet for plant specific details.	

Federal Specification SS-L-30D Type III, Grade X. The federal specification for gypsum board, SS-L-30D was withdrawn in 1984. It is provided here for informational purposes only.



NEED HELP WITH A PROJECT OR HAVE QUESTIONS ABOUT THIS PRODUCT?

Contact the PABCO® Gypsum Technical Services Team at (866) 282-9298.

ACHIEVE HIGH STC DESIGNS LIKE NEVER BEFORE WITH QUIETROCK®!

Visit www.QuietRock.com or call (800) 797-8159 to speak with a product specialist.

MANUFACTURER INFORMATION:

PABCO® Gypsum
a division of PABCO® building products, LLC
PO Box 419074
Rancho Cordova, CA 95741
Technical Services: 866-282-9298
www.PABCOgypsum.com

PABCO® Specification PGS-010
ASTM specification C 1396

DESCRIPTION:

MOLD CURB® Plus products have been engineered with a mold and water-resistant chemistry that provides the most enhanced mold-and-water-resistant protection available in gypsum board products. This Chemistry is incorporated into the naturally fire-resistant, non-combustible gypsum core and is encased in 100% recycled light blue colored face paper that is folded around the long edges to reinforce and protect the core and 100% recycled gray liner paper on the back. These paper facings are additionally treated for water and mold-resistance. The long panels edges are tapered allowing a recessed joint area to be reinforced and concealed to create a monolithic surface suitable for decorating. MOLD CURB® Plus Type X meets and/or exceeds the requirements specified by ASTM under its wallboard standard ASTM C 1396 Type X.

PRIMARY USES:

MOLD CURB® Plus combines the mold resistant performance of MOLD CURB® with WATER CURB® technology into a single interior mold and water resistant gypsum board product. MOLD CURB® Plus is engineered for use in high humidity areas where enhanced mold and moisture protection is needed on wall and ceiling applications. MOLD CURB® Plus is approved for exterior soffits and corridors or breezeways that are protected from direct exposure. MOLD CURB® Plus 1/2" thick panels are ideal for single layer applications. MOLD CURB® Plus 5/8" thick Type X panels are ideal for single or multiple-layer construction in fire-tested assemblies.

MOLD CURB® Plus

Mold & Water Resistant, Regular, Type X

When MOLD CURB® Plus is used in either wall or ceiling applications, framing spacing and fastening shall be as per section 4 of GA-216 (see "Applicable Standards" on following page).

LIMITATIONS:

- Direct exposure to excessive or continuous moisture is to be avoided.
- MOLD CURB® Plus should not be used in areas subject to constant and/or excessive moisture, and high humidity, such as a tile backer or plastic liner application in tub and shower surrounds, gang showers, saunas, steam rooms or swimming pool enclosures.
- When MOLD CURB® Plus is used as a tile backer for ceramic, porcelain or glass tile in a ceiling application, framing spacing shall be reduced to 16" O.C. for 5/8" and 12" o.c. for 1/2" MOLD CURB® Plus.
- MOLD CURB® Plus shall not be used where it will be exposed to temperatures exceeding 125° F for an extended period of time.

APPLICATION:

This product may be applied in building applications which require direct mechanical attachment to wood or metal wall and ceiling framing, or may be attached to existing surfaces using fasteners or adhesives. PABCO® Gypsum endorses and recommends the application specifications published in GA-216 (www.gypsum.org) and/or ASTM C 840 (www.astm.org).

MOLD & WATER RESISTANCE:

PABCO® MOLD CURB® Plus panels are manufactured with a special formulated gypsum core and paper facing, which provide enhanced protection against water-and-mold

as compared to untreated gypsum board panels. In independent laboratory tests per ASTM D 3273 (Standard Test Method for Resistance to Growth of Mold on the Resistance Surface of Interior Coatings in an Environmental Chamber), PABCO® MOLD CURB® Plus products achieved a 10 rating, the highest level of performance for this test method. No material may be classified as mold-proof. Prolonged exposure to moisture can result in the growth of mold on any surface. The use of good design, with proper handling and construction practices, is the most effective and best method to minimize mold. This includes avoiding water exposure during all phases of the project, such as: storage, handling, shipping, and product installation and system maintenance both before and after project completion.

FIRE RESISTANT RATINGS:

Fire Resistance Rated Designs are promulgated from tests performed at IAS* certified independent testing laboratories, and these designs include specific materials assembled in a precise configuration. When choosing construction details to achieve specific fire-resistance rated requirements, care must be taken to insure that each component of the specified assembly is the proper one specified in the referenced fire-resistance rated design, and assembled in accordance with the specific requirements of the assembly.

*The [International Accreditation Service](http://www.iasinc.org) — IAS — is a non-profit, public benefit corporation and a leading accreditation body in the United States. Internationally recognized, accreditation by IAS makes it easier to market products and services both inside and outside the United States.

continued on back

Job name:	
Contractor:	Date:

STORAGE & HANDLING:

Store all PABCO® gypsum panels flat; do not store on edge as panels are heavy and may fall over causing injury or death. Store panels in an area that offers protection from adverse weather conditions, condensation, and other forms of moisture. Avoid job site conditions that expose gypsum board to water or moisture. Plastic shipping bags are temporary, and intended for protection during transit only, and must be removed promptly upon arrival. Store gypsum board under protected cover, off the ground with sufficient support to prevent sagging. Exercise proper care to avoid impact, scuffing of the glass faces, undue flexing, and damage to board edges, corners, and ends.

WARRANTIES & REMEDIES:

Current warranty information for this product is available online at www.PABCOgypsum.com.

LEGAL NOTICES:

PABCO® Gypsum, the PABCO® logo, what the job demands™, and MOLD CURB® Plus are trademarks or registered trademarks of Pacific Coast Building Products, Inc. and licensed to PABCO® Gypsum in the United States and other countries. Products described herein may not be available in all geographic markets. Consult your PABCO® Gypsum sales representative for information. Product features and Information subject to change without notice.

Visit www.PABCOgypsum.com for product updates and current information.

MOLD CURB® Plus

Mold & Water Resistant, Regular, Type X

PRODUCT DATA, SIZES & TYPES:

Product	Thickness	Width	Length ¹	Edge Type	Weight ²	UL Core Type
MOLD CURB® Plus Regular	1/2" (12.7 mm)	48" (1219 mm)	8' (2438 mm), 12' (3658 mm)	Tapered	1.7 lbs/ft ²	N/A
MOLD CURB® Plus Type X	5/8" (15.8 mm)	48" (1219 mm)	8' (2438 mm), 12' (3658 mm)	Tapered	2.3 lbs/ft ²	PG-5W

PACKAGING: 2 pieces per bundle, face-to-face, and end labeled.

¹ Length availability may change; other lengths may be available on a special order basis. Consult with your local PABCO® representative

² Represents approximate weight for design and shipping purposes. A more exact weight may be available for your area; consult with your local PABCO® representative.

APPLICABLE STANDARDS & TECHNICAL DATA:

MOLD CURB® Plus Thickness	1/2"	5/8"
Manufacturing:	ASTM C 1396	
Installation:	Gypsum Association GA-216 – www.gypsum.org ASTM C 840 – www.astm.org	
Mold Resistance (ASTM D 3273):	10 (highest rating)	
Surface Burning Characteristics (ASTM E 84):	Flame Spread 15; Smoke Developed 0	
Combustibility (ASTM E 136):	Non-Combustible	
Fire-Resistant Assemblies:	not rated	*Gypsum Association GA-600, Fire Design Manual Underwriters Laboratories, UL Fire Resistance Directory
Flexural Strength, Load lbf (N) (ASTM C 473): Test Method B		
Perpendicular to substrate edge	107 lbf (476 N)	147 lbf (654 N)
Parallel to substrate edge	36 lbf (160 N)	46 lbf (205 N)
Humidified deflection (ASTM C 473):	10/8" (32 mm)	5/8" (16 mm)
Water absorption (ASTM C 473):	≤5%	≤5%
Thermal resistance R value (ASTM C 518):	0.45	0.48
Composition:	100% recycled paper face, gypsum core	
Material Safety Data Sheet MSDS:	MSDS available at www.PABCOgypsum.com , Technical Data	
Foil Application:	Foil may NOT be applied to the back of Water Resistant Gypsum Backing Board. See "Limitations" section on previous page.	
PABCO® Gypsum literature:	"Construction Guide: Fire & Sound Rated Systems"	
Recycled Content:	Refer to PABCO® Sustainable Materials Data Sheet for plant specific details.	

Federal Specification SS-L-30D Type VI, Grade X & R. The federal specification for gypsum board, SS-L-30d was withdrawn in 1984. It is provided here for informational purposes only.

* Frame spacing shall be reduced to 16" O.C. for 5/8" panels or 12" o.c. for 1/2" panels only when used as a tile backer for attaching ceramic, porcelain or glass tiles. See GA-216 for details.



NEED HELP WITH A PROJECT OR HAVE QUESTIONS ABOUT THIS PRODUCT?

Contact the PABCO® Gypsum Technical Services Team at (866) 282-9298.

ACHIEVE HIGH STC DESIGNS LIKE NEVER BEFORE WITH QUIETROCK®!

Visit www.QuietRock.com or call (800) 797-8159 to speak with a product specialist.

MANUFACTURER INFORMATION:

PABCO® Gypsum
a division of PABCO® building products, LLC
PO Box 419074
Rancho Cordova, CA 95741
Technical Services: 866-282-9298
www.PABCOgypsum.com

PABCO® Specification PGS-011
ASTM specification C 1629

DESCRIPTION:

ABUSE CURB® Type X gypsum panels are comprised of a proprietary high density fire resistant Type X gypsum core that incorporates the MOLD CURB® Plus technology. These gypsum panels are encased in a heavy and durable 100% recycled light-blue colored mold/mildew abrasion-resistant face paper that is folded along the long edges to reinforce in addition to protecting the core, and 100% recycled heavy mold/mildew resistant gray liner paper on the back side. The long edges are tapered allowing a recessed joint area to be reinforced and concealed below the decorating surface, resulting in a monolithic wall finish. The ends are cut square and finished smooth. ABUSE CURB® Type X meets and/or exceeds the requirements specified by ASTM under its wallboard standard ASTM C 1396 Type X.

ABUSE CURB® Type X is "classified" by Underwriters Laboratories in accordance with ASTM E 119.

PRIMARY USES:

ABUSE CURB® gypsum panels are a high density formulated core that is designed for interior wall assemblies where surface durability (abrasion and surface indentation), and mold and water resistance are primary considerations. These gypsum panels have been designed and tested for use on high traffic interior walls (i.e. schools, hospitals, corrections facilities and offices), and partitions in either new or renovation construction applications where surface durability, abrasion, indentation, water and mold/mildew resistance are the desired attributes for the finished wall.

LIMITATIONS:

- PABCO® ABUSE CURB® Type X gypsum panels are intended for interior applications, and shall not be used where there will be direct exposure to water or continuous high humidity before, during, and after construction. Avoid exposure to temperatures exceeding 125° F (52° C) for an extended period of time.
- PABCO® ABUSE CURB® Type X gypsum panels are a non-structural panel, not intended to be used as a structural fastener base or to support wall or ceiling mounted objects.
- All materials used in conjunction with the application of PABCO® ABUSE CURB® Type X gypsum panels shall be as specified in the applicable specific test report.

APPLICATION:

ABUSE CURB® gypsum panels are designed for direct mechanical attachment (nail, screw or adhesive) to wood or metal substrates, or attached to an existing surface using fasteners or adhesives. With the wallboard joints properly treated per GA-216 and GA-214, ABUSE CURB® gypsum panels will resist the passage of smoke. PABCO® Gypsum endorses and recommends the application specifications published in GA-216 (www.gypsum.org) and/or ASTM C 840 (www.astm.org) as its application specification that provide detailed instructions on the standard application of wallboard panels and proper joint finishing procedures.

For fire and sound rated systems it is important that you consult the appropriate fire resistance directory or test report for the complete assembly documentation and related information. These systems must be installed in strict compliance with the detailed fire test assembly description, including core types and other components such as studs, fastener spacing and fasteners

ABUSE CURB®

Mold, Water & Abuse Resistant Type X

type and installed as tested. To qualify for listed sound ratings, special caulking, insulation or clips are generally added to the systems as detailed in the test report.

MOLD & WATER RESISTANCE:

ABUSE CURB® abuse-resistant gypsum panels have been engineered with a water-resistant chemistry that provides the most enhanced water and mold-resistant protection available in gypsum board products, to provide protection against mold due to chemical treatment of the paper facings and the gypsum core, as compared to untreated gypsum panels. In independent laboratory tests per ASTM D 3273 (Standard Test Method for Resistance to Growth of Mold on the Resistance Surface of Interior Coatings in an Environmental Chamber), ABUSE CURB® abuse-resistant gypsum panel products achieved a 10 rating, the highest level of performance for this test method. No material may be classified as mold-proof. Prolonged exposure to moisture can result in the growth of mold or mildew on any surface. The use of good design, with proper handling and construction practices, is the most effective and best method to minimize mold. This includes avoiding water exposure during all phases of the project, such as: storage, handling, shipping, and product installation and system maintenance both before and after project completion.

FIRE RESISTANT RATINGS:

Fire Resistance Rated Designs are promulgated from tests performed at IAS* certified independent testing laboratories, and these designs include specific materials assembled in a precise configuration. When choosing construction details to achieve specific fire-resistance rated requirements, care must be taken to insure that each component of the

continued on back

Job name:	
Contractor:	Date:

specified assembly is the proper one specified in the referenced fire-resistance rated design, and assembled in accordance with the specific requirements of the assembly.

*The [International Accreditation Service — IAS](#) — is a non-profit, public benefit corporation and a leading accreditation body in the United States. Internationally recognized, accreditation by IAS makes it easier to market products and services both inside and outside the United States.

STORAGE & HANDLING:

Store all PABCO® gypsum panels flat; do not store on edge as panels are heavy and may fall over causing injury or death. Store in an area that offers protection from adverse weather conditions, condensation, and other forms of moisture. Avoid job site conditions that expose gypsum board to water or moisture. Plastic shipping bags are temporary, and intended for protection during transit only, and must be removed promptly upon arrival. Store gypsum board under protected cover, off the ground with sufficient support to prevent sagging. Exercise proper care to avoid impact, scuffing of the glass faces, undue flexing, and damage to board edges, corners, and ends.

WARRANTIES & REMEDIES:

Current warranty information for this product is available online at www.PABCOgypsum.com.

LEGAL NOTICES:

PABCO® Gypsum, the PABCO® logo, what the job demands™, ABUSE CURB®, and MOLD CURB® Plus are trademarks or registered trademarks of Pacific Coast Building Products, Inc. and licensed to PABCO® Gypsum in the United States and other countries. Products described herein may not be available in all geographic markets. Consult your PABCO® Gypsum sales representative for information. Product features and Information subject to change without notice. Visit www.PABCOgypsum.com for product updates and current information.

ABUSE CURB®

Mold & Water Resistant Type X

PRODUCT DATA, SIZES & TYPES:

Product	Thickness	Width	Length ¹	Edge Type	Weight ²	UL Core Type
ABUSE CURB® Type X	5/8" (15.8 mm)	48" (1219 mm)	12' (3658 mm)	Tapered	2.9 lbs/ft ²	PG-5W

PACKAGING: 2 pieces per bundle, face-to-face, and end labeled.

¹ Length availability may change; other lengths may be available on a special order basis. Consult with your local PABCO® representative

² Represents approximate weight for design and shipping purposes. A more exact weight may be available for your area; consult with your local PABCO® representative.

APPLICABLE STANDARDS & TECHNICAL DATA:

ABUSE CURB® Thickness	5/8"
Manufacturing:	ASTM C 1629
Installation:	Gypsum Association GA-214, GA-216 – www.gypsum.org ASTM C 840 – www.astm.org
Mold Resistance (D 3273):	10 (highest rating)
Surface Burning Characteristics (ASTM E 84):	Flame Spread 15; Smoke Developed 0
Combustibility (ASTM E 136):	Non-Combustible
Fire-Resistant Assemblies:	Gypsum Association GA-600, Fire Design Manual Underwriters Laboratories, UL Fire Resistance Directory
Surface Abrasion Resistance (ASTM D 4977):	Classification Level 2
Indentation Resistance (ASTM D 5420):	Classification Level 1
Soft Body Impact (ASTM E 695):	Classification Level 1
Flexural Strength, Load lbf (N) (ASTM C 473): Test Method B	
Perpendicular to substrate edge	163 lbf (723 N)
Parallel to substrate edge	46 lbf (205 N)
Humidified deflection (ASTM C 473):	5/8" (16 mm)
Water absorption (ASTM C 473):	≤5%
Thermal resistance R value (ASTM C 518):	0.48
Composition:	100% recycled paper face, gypsum core
Material Safety Data Sheet MSDS:	MSDS available at www.PABCOgypsum.com , Technical Data
Foil Application:	Foil may be applied to the back of ASTM C 1396 gypsum wallboard for the purpose of complying with ASTM C 1396 paragraph 5.1.
PABCO® Gypsum literature:	"Construction Guide: Fire & Sound Rated Systems"
Recycled Content:	Refer to PABCO® Sustainable Materials Data Sheet for plant specific details.

Federal Specification SS-L-30D Type III, Grade WX. The federal specification for gypsum board, SS-L-30d was withdrawn in 1984. It is provided here for informational purposes only. Note: Independent abuse testing performed by Intertek Testing Services.



NEED HELP WITH A PROJECT OR HAVE QUESTIONS ABOUT THIS PRODUCT?

Contact the PABCO® Gypsum Technical Services Team at (866) 282-9298.

ACHIEVE HIGH STC DESIGNS LIKE NEVER BEFORE WITH QUIETROCK®!

Visit www.QuietRock.com or call (800) 797-8159 to speak with a product specialist.

MANUFACTURER INFORMATION:

PABCO® Gypsum
a division of PABCO® building products, LLC
PO Box 419074
Rancho Cordova, CA 95741
Technical Services: 866-282-9298
www.PABCOgypsum.com

PABCO® Specification PGS-012
ASTM specification C 1396

DESCRIPTION:

PABCO® Impact Resistant Type X gypsum panels are comprised of a proprietary high density fire resistant Type X gypsum core that incorporates the MOLD CURB® Plus technology. This product is designed for interior wall assemblies where surface durability (abrasion and indentation resistance), and mold and water resistance are primary considerations.

PABCO® Impact Resistant Type X gypsum panels are encased in a heavy and durable 100% recycled light-blue colored mold/mildew abrasion-resistant face paper, and 100% recycled heavy mold/mildew resistant grey liner paper on the back side. The panels incorporate a layer of embedded fiberglass mesh to further enhance impact resistance. This product features a tapered edge formation that provides a recessed area to allow for the finished joint system to be below the decorating surface, resulting in a monolithic wall finish. The ends are cut square and finished smooth.

PRIMARY USES:

PABCO® Impact Resistant Type X gypsum panels incorporate a high density core that provides superior resistance to abrasion and surface indentation. These gypsum panels have been designed and tested for use on high traffic interior walls (i.e. schools, hospitals, corrections facilities and offices), and partitions in either new or renovation construction applications where surface durability, abrasion, indentation, water and mold/mildew resistance are the desired attributes for the finished wall. PABCO® Impact Resistant Type X gypsum panels are designed for direct mechanical attachment (nail or screw)

PABCO® IMPACT RESISTANT

Impact, Abuse, Mold & Water Resistant

to wood or metal substrates, or attached to an existing surface using fasteners. With the wallboard joints properly treated per GA-216 and GA-214, PABCO® Impact Resistant Type X gypsum panels will resist the passage of smoke.

LIMITATIONS:

- PABCO® Impact Resistant Type X gypsum panels are intended for interior applications, and shall not be used where there will be direct exposure to water or continuous high humidity before, during, and after construction. Avoid exposure to temperatures exceeding 125° F (52° C) for an extended period of time.
- PABCO® Impact Resistant Type X gypsum panels are a non-structural panel, not intended to be used as a structural fastener base or to support wall or ceiling mounted objects. All materials used in conjunction with the application of Impact Resistant Type X gypsum panels shall be as specified in the applicable specific test report.
- Abuse/impact resistance performance on metal framing requires a minimum of 20 gauge metal substrate be used at a maximum spacing of 16 inches on center.

APPLICATION:

PABCO® Gypsum endorses and recommends the application specifications published in GA-216 (www.gypsum.org) and/or ASTM C 840 (www.astm.org).

MOLD & WATER RESISTANCE:

PABCO® Impact Resistant Type X gypsum panels have been engineered with a water-resistant chemistry that provides the most enhanced water and mold-resistant protection available in gypsum board products, to provide protection against mold due to chemical treatment of

the paper facings and the gypsum core, as compared to untreated gypsum panels. In independent laboratory tests per ASTM D 3273 (Standard Test Method for Resistance to Growth of Mold on the Resistance Surface of Interior Coatings in an Environmental Chamber), PABCO® Impact Resistant Type X gypsum panel products achieved a 10 rating, the highest level of performance for this test method.

No material may be classified as mold-proof. Prolonged exposure to moisture can result in the growth of mold or mildew on any surface. The use of good design, with proper handling and construction practices, is the most effective and best method to minimize mold. This includes avoiding water exposure during all phases of the project, such as: storage, handling, shipping, and product installation and system maintenance both before and after project completion. Water absorption less than 5% when tested per ASTM C 473.

FIRE RESISTANT RATINGS:

Fire Resistance Rated Designs are promulgated from tests performed at IAS* certified independent testing laboratories, and these designs include specific materials assembled in a precise configuration. When choosing construction details to achieve specific fire-resistance rated requirements, care must be taken to insure that each component of the specified assembly is the proper one specified in the referenced fire-resistance rated design, and assembled in accordance with the specific requirements of the assembly.

*The [International Accreditation Service](http://www.iasinc.org) — IAS — is a non-profit, public benefit corporation and a leading accreditation body in the United States. Internationally recognized, accreditation by IAS makes it easier to market products and services both inside and outside the United States.

continued on back

Job name:	
Contractor:	Date:

STORAGE & HANDLING:

Store all PABCO® gypsum panels flat; do not store on edge as panels are heavy and may fall over causing injury or death. Store in an area that offers protection from adverse weather conditions, condensation, and other forms of moisture. Avoid job site conditions that expose gypsum board to water or moisture. Plastic shipping bags are temporary, and intended for protection during transit only, and must be removed promptly upon arrival. Store gypsum board under protected cover, off the ground with sufficient support to prevent sagging. Exercise proper care to avoid impact, scuffing of the glass faces, undue flexing, and damage to board edges, corners, and ends.

WARRANTIES & REMEDIES:

Current warranty information for this product is available online at www.PABCOgypsum.com.

LEGAL NOTICES:

PABCO® Gypsum, the PABCO® logo, what the job demands™, and MOLD CURB® Plus are trademarks or registered trademarks of Pacific Coast Building Products, Inc. and licensed to PABCO® Gypsum in the United States and other countries. Products described herein may not be available in all geographic markets. Consult your PABCO® Gypsum sales representative for information. Product features and Information subject to change without notice. Visit www.PABCOgypsum.com for product updates and current information.

PABCO® IMPACT RESISTANT

Abuse, Mold & Water Resistant

PRODUCT DATA, SIZES & TYPES:

Product	Thickness	Width	Length ¹	Edge Type	Weight ²	UL Core Type
PABCO® IMPACT Resistant Type X	5/8" (15.8 mm)	48" (1219 mm)	12' (3658 mm)	Tapered	2.9 lbs/ft ²	PG-5W

PACKAGING: 2 pieces per bundle, face-to-face, and end labeled.

¹ Length availability may change; other lengths may be available on a special order basis. Consult with your local PABCO® representative

² Represents approximate weight for design and shipping purposes. A more exact weight may be available for your area; consult with your local PABCO® representative.

APPLICABLE STANDARDS & TECHNICAL DATA:

PABCO® Impact Resistant Thickness	5/8"
Manufacturing:	ASTM C 1396
Installation:	Gypsum Association GA-214, GA-216 – www.gypsum.org ASTM C 840 – www.astm.org
Mold Resistance (ASTM D 3273):	10 (highest rating)
Surface Burning Characteristics (ASTM E 84):	Flame Spread 15; Smoke Developed 0
Combustibility (ASTM E 136):	Non-Combustible
Fire-Resistant Assemblies:	Gypsum Association GA-600, Fire Design Manual Underwriters Laboratories, UL Fire Resistance Directory
Surface Abrasion Resistance (ASTM D 4977):	Classification Level 2
Indentation Resistance (ASTM D 5420):	Classification Level 1
Soft Body Impact (ASTM E 695):	Classification Level 3
Hard Body Impact (ASTM C 1629):	Classification Level 3
Flexural Strength, Load lbf (N) (ASTM C 473): Test Method B	
Perpendicular to substrate edge	147 lbf (654 N)
Parallel to substrate edge	46 lbf (205 N)
Humidified deflection (ASTM C 473):	5/8-in (16mm)
Water absorption (ASTM C 473):	≤ 5%
Thermal resistance R value (ASTM C 518):	0.48
Composition:	100% recycled paper face, gypsum core
Material Safety Data Sheet MSDS:	MSDS available at www.PABCOgypsum.com , Technical Data
Foil Application:	Foil may be applied to the back of ASTM C 1396 gypsum wallboard for the purpose of complying with ASTM C 1396 paragraph 5.1.
PABCO® Gypsum literature:	"Construction Guide: Fire & Sound Rated Systems"
Recycled Content:	Refer to PABCO® Sustainable Materials Data Sheet for plant specific details.

Federal Specification SS-L-30D Type VII, Grade WX. The federal specification for gypsum board, SS-L-30d was withdrawn in 1984. It is provided here for informational purposes only. Note: Independent abuse testing performed by Intertek Testing Services.



NEED HELP WITH A PROJECT OR HAVE QUESTIONS ABOUT THIS PRODUCT?

Contact the PABCO® Gypsum Technical Services Team at (866) 282-9298.

ACHIEVE HIGH STC DESIGNS LIKE NEVER BEFORE WITH QUIETROCK®!

Visit www.QuietRock.com or call (800) 797-8159 to speak with a product specialist.

protection from the elements
when you need it most



PABCO GLASS® Exterior Sheathing protects your building from fire, mold and water. The combination of our proprietary reinforced gypsum core and distinctive orange fiberglass facing, provides added dimensional stability that resists warping, rippling, buckling, and sagging.

Keep your project on track in any weather. When you see orange, you'll know that PABCO® is protecting your building long before it begins protecting the people inside.

PABCO® Gypsum technical services:
866.282.9298

www.PABCOgypsum.com

 **PABCO® Gypsum**
what the job demands™

SOUND CONTROL HAS A QUIET® STANDARD



Ask for the product that sets this standard - QuietRock Sound Reducing Drywall.

QuietRock® is the original sound reducing drywall—accept no substitutes! PABCO® Gypsum's innovation in viscoelastic polymer and gypsum core technologies result in a wallboard that is easy to install, cost effective and improves your STC results. Backed by a dedicated technical support team and extensive testing, QuietRock is your solution to sound control. The next time you think about STC, remember PABCO Gypsum—we put the Q in Quiet®.

Learn more: Visit QuietRock.com or call 1-800-797-8159

QuietRock®
Sound Reducing Drywall





Sound Damping Products

Specific data for products listed below is available on their respective individual Specification and Submittal Sheets which are available on the QuietRock® web site: www.QuietRock.com. Other lengths may be available on a special order basis. Contact your local QuietRock® representative, or call QuietRock® Acoustical Services at **800-797-8159**.

Product	Core	Thickness	Width	Length ¹	Edge Type	ASTM Standard	UL Core Type
QUIETROCK® ES – POWERED BY EZ-SNAP TECHNOLOGY							
QUIETROCK® ES STANDARD Sound damping panel for walls and ceilings	Type X	5/8"	48"	8', 9', 10'	Tapered	C 1396	QRES
QUIETROCK® ES MOLD RESISTANT Sound damping panel for walls and ceilings	Type X	5/8"	48"	8', 9', 10'	Tapered	C 1396	QRES
SPECIALTY PANELS							
QUIETROCK® 510 Sound damping panel for walls and ceilings – new and renovation	Regular	1/2"	48"	8', 9', 10', 12'	Tapered	C 1396	QR510
QUIETROCK® 530 Sound damping panel for walls and ceilings – with impact and shear	Regular	5/8"	48"	8', 9', 10', 12'	Tapered	C 1396	QR530
QUIETROCK® 545 Sound damping panel for walls and ceilings – high performance low frequency attenuation	Regular	1-3/8"	48"	8'	Tapered	C 1396	QR545
RADIO FREQUENCY SHIELDING SYSTEM							
QUIETROCK® 530 RF Sound damping panel for walls and ceilings – with RF shielding	Regular	5/8"	48"	8', 9', 10', 12'	Tapered	C 1396	QR530
QUIETSEAM® RF Conductive seam	1 & 5 Gallon	N/A	N/A	N/A	500 linear ft/ Gallon	N/A	N/A
QUIET® RF SHIELDING TAPE Adhesive metal tape to maintain continuous connectivity	Roll	N/A	3/4"	54'	54 linear ft	N/A	N/A
	Roll	N/A	1-3/4"	54'	54 linear ft	N/A	N/A
ACCESSORIES							
Product	Unit Size	Thickness	Width	Length ¹	Coverage	ASTM Standard	VOC
QUIETSEAL® PRO Acoustical Sealant for use in sealing wall and ceiling perimeters	28oz Tube Case of 12	N/A	N/A	N/A	16 ft ² /tube	D 3273	<0.1 g/L
	1 & 5 Gallon	N/A	N/A	N/A	73 ft ² / Gallon		
QUIETPUTTY® Acoustical Putty for wall and ceiling penetrations	Box of 10	1/8"	7"	7"	1 pad per outlet box	D 412 C 627	N/A
QUIETGLUE® PRO DIY sound damping polymer	28oz Tube Case of 12	N/A	N/A	N/A	16 ft ² /tube	D 3273	<0.1 g/L
	1 & 5 Gallon	N/A	N/A	N/A	73 ft ² / Gallon		
QUIETCOAT® Acoustical Coating for metal and plastics	1 & 5 Gallon	N/A	N/A	N/A	40 - 80 ft ² / Gallon	D 562	<0.1 g/L

¹ Other lengths may be available on a special order basis.

IF YOUR WALLS COULD TALK THEY WOULD ASK FOR US



STOP NOISE FROM CRASHING THROUGH WITH QUIETROCK

Get the original, most advanced drywall product to reduce noise in your projects.

- Hangs and finishes like standard drywall
- Lower installed cost compared to other methods
- Proven in thousands of projects
- UL-classified, Type X fire-rated*

For help with your project, call **800.797.8159** or visit www.QuietRock.com

*Some QuietRock models and assemblies. See website for details and trademark information.

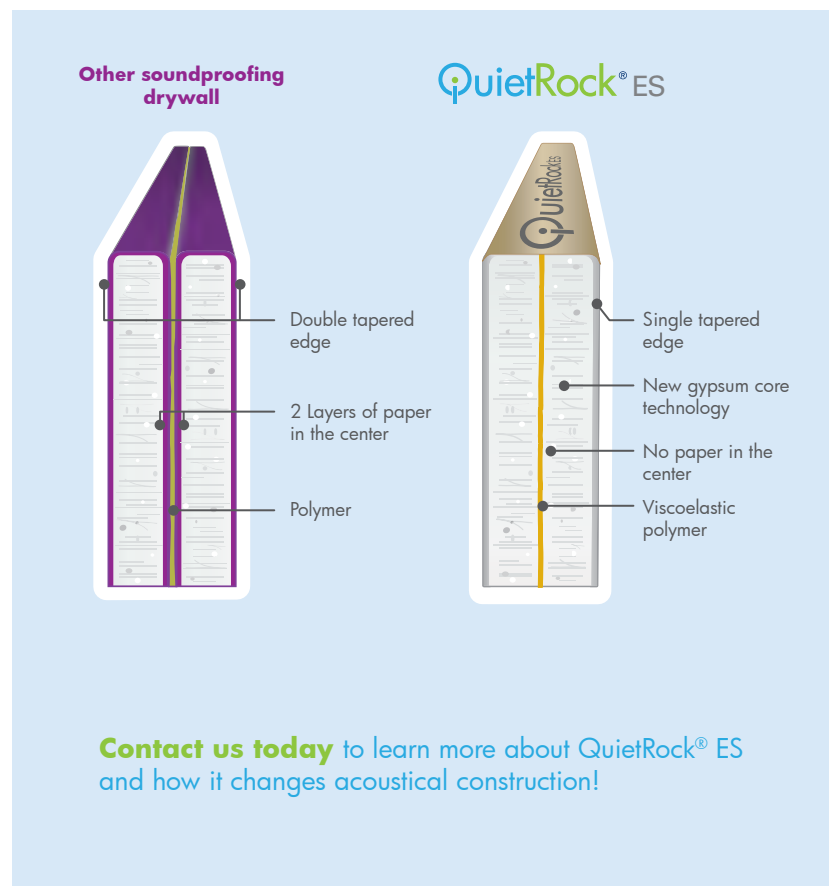
QuietRock[®]
sound reducing drywall

QuietRock® ES

Changing the Acoustical Drywall Industry

QuietRock® ES and ES Mold Resistant sound damping drywall, with patented EZ-SNAP™ technology, is easier to score and snap compared to other sound reducing drywall products on the market. With less material to install, QuietRock® ES allows builders to save space, time and waste compared to multiple layers of drywall. This revolutionary acoustical drywall product will change how you build to reduce noise transmission.

- **High Performance and Reliability:** QuietRock® ES outperforms other sound-reducing methods, and can be used on ceilings and load bearing walls. Unlike resilient channel, QuietRock® ES cannot be easily short-circuited.
- **Lower Cost:** QuietRock® ES is easier and faster to install than other sound-isolating materials or methods - leading to increased productivity and lower labor costs.
- **Ease of Use:** QuietRock® ES has no paper in the middle making it easier to score and snap than other noise reducing drywall brands. With EZ-SNAP™ technology, QuietRock® ES is the professionals' choice for sound isolation.



POWERED BY EZ-SNAP

QuietRock® ES with EZ-SNAP™ technology has no paper on the inside of the panel yet delivers acoustical ratings higher than traditional noise reducing methods such as multiple layers of drywall. This 5/8" load bearing, Type X, 1-hour fire rated panel, will help make your sound control installations a huge success. QuietRock® ES Mold Resistant available.

Quiet® products address the annoying sounds that can cause distractions and obstruct privacy. The QuietRock®, QuietPutty®, QuietSeal® Pro products are engineered to work together in order to meet architectural goals, while saving builders' time and exceed customer expectations.

QuietPutty® 380 Acoustical Putty

QuietPutty® is a moldable putty designed to maintain the performance of acoustically rated walls with penetrations such as electrical outlets, HVAC ducts, water hookups and cables. QuietPutty® is clean, easy to use and requires no tools.

QuietSeal® Pro Acoustical Sealant

QuietSeal® Pro is a non-hardening, easy clean-up acoustical sealant used to maintain and optimize acoustically rated wall, floor or ceiling assemblies. QuietSeal® Pro is designed to remain soft over time and maintain a proper seal in assemblies in order to prevent noise leaks. QuietSeal® Pro can be applied to perimeters of walls, ceilings, wall partitions, junction boxes, or any small penetrations.

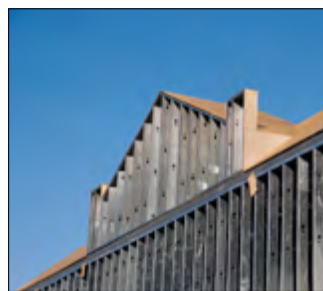
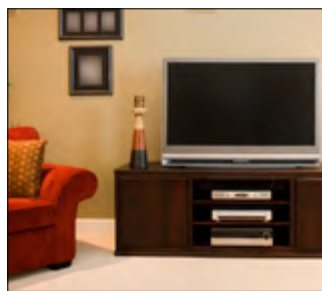
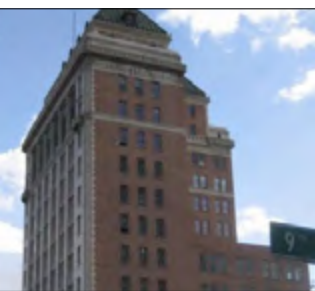
QuietGlue® Pro Acoustical Adhesive

QuietGlue® Pro is a simple, low-cost alternative for jobs where multiple layers of drywall are specified. Independent lab results prove that assemblies using QuietGlue® Pro in between layers of standard drywall, can achieve greater sound reduction compared to drywall alone.

QuietRock® models for specific needs Quiet® products (QuietRock®, QuietSeal®, and QuietPutty®) address the annoying sounds that can cause distractions and obstruct privacy. QuietRock® is designed to reduce noise and meet architect design goals, while saving builders' time and exceeding customer expectations. QuietRock® provides performance and reliability with a simple installation – similar to standard gypsum panels. QuietRock® is clearly the key contributor to a quieter, more private and comfortable living and working space.

	MODEL	THICKNESS	FEATURES	APPLICATION	UL/ULC
BASIC	510	1/2"	Lowest cost sound damping panel	Lowest-cost option suitable for basic remodel & retrofit projects	-
	ES	5/8"	Low cost Type X with easy score & snap technology	Ideal for any new or existing project	CLASSIFIED c UL US
ULTIMATE	ES MR	5/8"	Mold resistant Type X with easy score & snap technology	Ideal for any new or existing project in mold sensitive areas	CLASSIFIED c UL US
	530	5/8"	Heavy duty impact-resistant Type X	For use in high traffic or areas prone to impact abuse	CLASSIFIED c UL US
SPECIALIZED	530 RF	5/8"	Impact-resistant Type X with radio frequency (RF) shielding material	Special application for SCIF or projects requiring RF shielding	CLASSIFIED c UL US
	545	1-3/8"	Highest performance range at low frequencies (50 Hz or less)	Designed for high-end media rooms, recording studios & theaters	-
EXTREME					

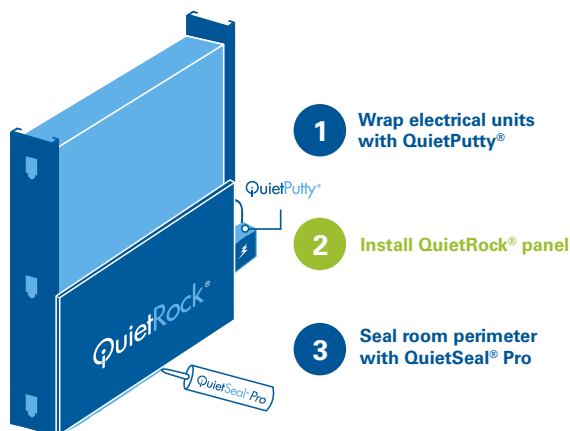
QuietRock® 510



The **LOWEST-COST SOLUTION** for Remodels & Commercial Applications

1/2" QuietRock® 510 is designed to improve Sound Transmission Class (STC) performance at an entry level price. QuietRock® 510 is an excellent choice for boosting STC ratings in remodeling, rehab, and new construction projects where 1/2" panel thickness is desired. QuietRock® 510 installs and finishes like standard drywall, requiring no special tools or training to use.

The Quiet® Sound Damping System in 3 easy steps:



QuietRock® 510 Benefits

- Great value, offering solid performance at the lowest cost on the market
- Delivers STC ratings of 47-52
- UL classified in select fire rated assemblies
- Ideal for remodels and upgrades – installs over existing drywall, with no demolition¹
- Continues to reduce noise even when fixtures are installed, such as shelves or lamps
- Only 1/2" thick
- Outperforms other sound damping methods, including soundboard and resilient channel
- Patented technology

¹ Not recommended for ceiling applications as a face layer

QuietRock® 510



1/2" low cost sound damping gypsum panel – ideal for installation in residential and remodeling applications. Installs similar to standard gypsum panels, no special tools required.

Product Specifications:

Thickness: 1/2" (12.7mm), tapered edges
Width: 4' (1220mm)
Lengths: 8' (2438mm), 9' (2743mm), 10' (3048mm), 12' (3658mm)
Weight: 2.13 lbs/sqft
STC-rated Assemblies (per ASTM E 90): 47-52
Flame Spread (per ASTM E 84): Class A
Product Standards: C1766
Installation Standards: ASTM C 840; GA-214, GA-216

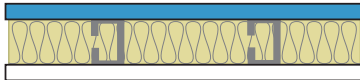
UL Assembly:

QuietRock® 510 is approved for use as an additional layer on one or both sides of the U300, U400, V400 and W400 wall designs as the face layer or attached to the studs. QuietRock® 510 is approved for use as an additional layer in the L500 and M500 series floor/ceiling assemblies.¹ QuietRock® 510 panel not evaluated nor intended as a substitute for the required layer(s) of UL Classified Gypsum Board in the above listed designs.

Common Wall Assemblies:

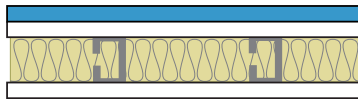
Single Light Gauge Steel Frame Walls

STC 50: 3-5/8" 25 ga. Steel Studs, 24" o.c.



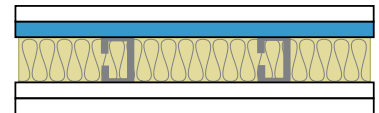
1/2" QuietRock® on one side,
1/2" Gypsum on the other

STC 54: 3-5/8" 25 ga. Steel Studs, 24" o.c.



1/2" QuietRock® over Type X on one side,
Type X on the other

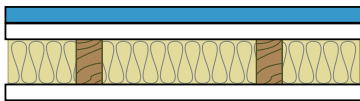
STC 57: 3-5/8" 25 ga. Steel Studs, 24" o.c.



Type X over 1/2" QuietRock® on one side,
Type X over Type X on the other

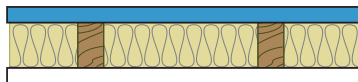
Single Wood Frame Walls

STC 47: Single 2x4 wood studs, 24" o.c.



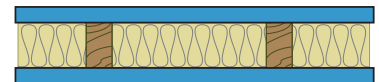
1/2" QuietRock® over 1/2" Gypsum on one side,
1/2" Gypsum on the other

STC 49: Single 2x4 wood studs, 24" o.c.



1/2" QuietRock® on one side,
1/2" Gypsum on the other

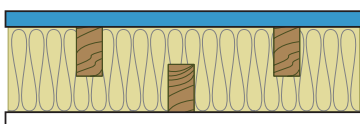
STC 52: Single 2x4 wood studs, 24" o.c.



1/2" QuietRock® on both sides

Other Wood Frame Walls

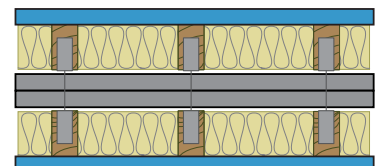
STC 54*: Staggered 2x4 wood studs, 8" o.c.



1/2" QuietRock® on one side
1/2" Gypsum on the other

Visit www.QuietRock.com for additional assemblies and technical information

STC 69: Double 2x4 wood studs, 16" o.c.

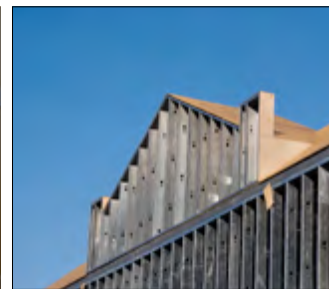


QuietRock® on both outer walls
1" fire-shield shaft liner material both sides

* Estimated STC based on independent laboratory testing

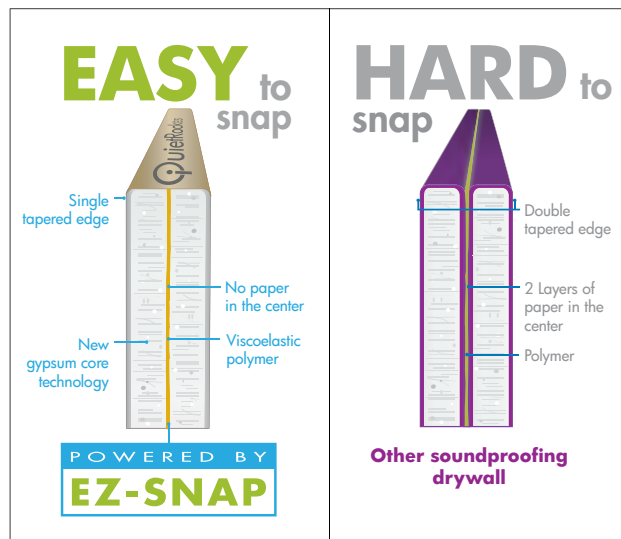
¹ For use as a base layer in multi-layer ceiling applications only

The information contained in this document is for general purposes only. Features and specifications are subject to change. The diagrams and stated STC ratings are intended to serve as a guide. Construction practices have an influence on final STC ratings. PABCO® Gypsum cannot guarantee actual STC ratings. Flanking sound patterns, the integrity of the wall, and construction methods factor in effective sound control. Exposure to excessive or continuous moisture and extreme temperatures of 125°F (52°C) or more should be avoided. QuietRock® panels should be stored flat in a dry area, under cover, on supported risers to prevent damage to product. Proper care should be taken while transporting, storing, applying and maintaining QuietRock® panels.



Low cost, true score and snap with **EZ-SNAP®** technology

QuietRock® ES is the first sound reducing drywall that easily scores and snaps using breakthrough EZ-SNAP® technology. QuietRock® ES has no paper and no metal on the inside of the panel yet delivers acoustical ratings on single stud construction. This patented product is easier to install and is less expensive than any other sound reducing drywall and is ideal for residential and commercial construction.



QuietRock ES Benefits

- Powered by EZ-SNAP® for true score and snap
- Easier to snap than other acoustical drywall
- Installs quickly for increased productivity and lower labor costs
- Maximizes usable floor space by using just a single layer
- Outperforms other sound isolation methods, including soundboard and resilient channel
- High reliability: unlike resilient channel, cannot be easily short circuited
- Abrasion resistant paper



Type X, 5/8" sound damping gypsum panel without paper or metal in the core. Cuts and installs similar to regular gypsum panel products. QuietRock® ES is the professional's choice for acoustic walls in residential and commercial applications.

Product Specifications:

Thickness: 5/8" (15.9mm), tapered edges
Width: 4' (1220mm)
Lengths: 8' (2438mm), 9' (2743mm), 10' (3048mm)
Weight: 2.6 lbs/sqft
STC-rated Assemblies (per ASTM E 90): 48-60
Fire-rated (per ASTM E 119, UL263): 1 hour, Type X
Flame Spread (per ASTM E 84): Class A
Product Standards: ASTM C 1396
Installation Standards: ASTM C 840; GA-214, GA-216

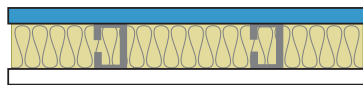
UL Assembly:  

Approved for use in many one and two hour fire-rated assemblies including U305, U309, U340, U341, U376, U386, U425, U465, V419, V463, V464, W313, W317, W459, and W460. Go to www.QuietRock.com for additional information on fire-rated assemblies. QuietRock® ES can be incorporated in several one and two-hour fire-rated UL designs. However, it is not intended as a direct substitute for a UL Classified Gypsum Board in all fire assemblies. Refer to the specific UL designs for assembly details.

Common Wall Assemblies:

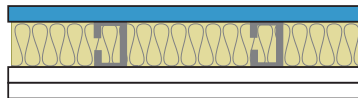
Light Gauge Steel Stud Walls

Single 3 5/8" Steel Stud Wall, 24" OC - **STC 55**



QuietRock® on one side,
Type X on the other

Single 3 5/8" Steel Stud Wall, 24" OC - **STC 60**

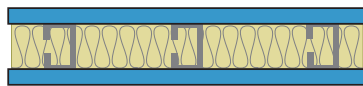


QuietRock® on one side,
2 layers 5/8" Type X on the other

Visit www.QuietRock.com for additional assembly and technical information

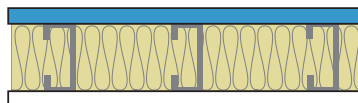
Heavy Gauge Steel Stud Walls

3-5/8" Single Steel Stud Wall, 16" OC - **STC 48**



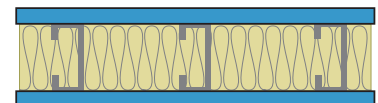
QuietRock® on both sides

6" Single Steel Stud Wall, 16" OC - **STC 49**



QuietRock® on one side,
Type X on the other

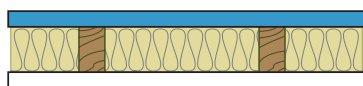
6" Single Steel Stud Wall, 16" OC - **STC 53**



QuietRock® on both sides

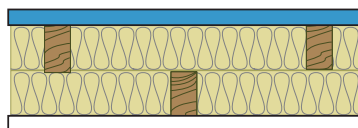
Wood Stud Walls

Single 2x4 wood studs, 24" OC - **STC 51**



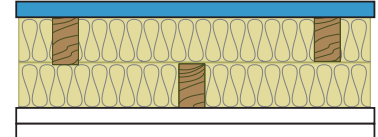
QuietRock® on one side,
Type X on the other

Staggered 2x4 wood studs, 8" OC - **STC 55**



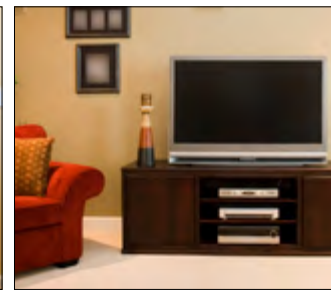
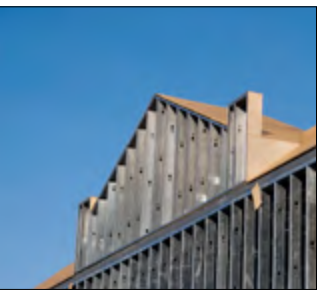
QuietRock® on one side
Type X on the other

Staggered 2x4 wood studs, 8" OC - **STC 60**



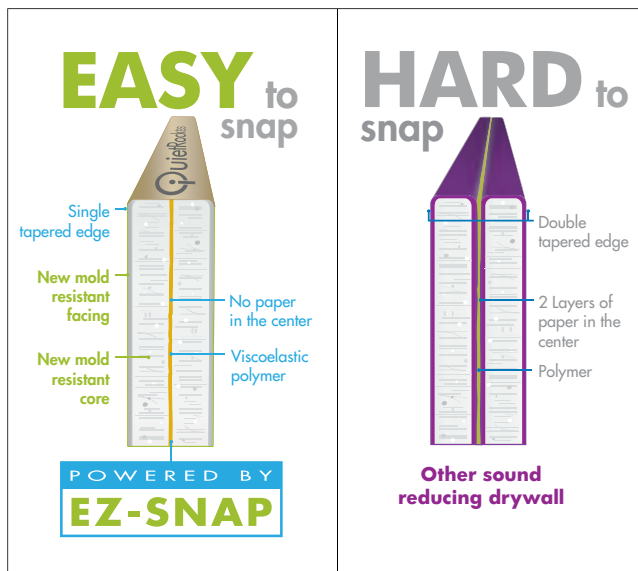
QuietRock® on one side
2 layers 5/8" Type X on the other

The information contained in this document is for general purposes only. Features and specifications are subject to change. The diagrams and stated STC ratings are intended to serve as a guide. Construction practices have an influence on final STC ratings. PABCO® Gypsum cannot guarantee actual STC ratings. Flanking sound patterns, the integrity of the wall, and construction methods factor in effective sound control. Exposure to excessive or continuous moisture and extreme temperatures of 125°F (52°C) or more should be avoided. QuietRock® should be stored flat in a dry area, under cover, on supported risers to prevent damage to product. Proper care should be taken while transporting, storing, applying and maintaining QuietRock.



The **ONLY** mold resistant sound reducing panel with **EZ-SNAP®** technology

QuietRock® ES Mold Resistant is the first and only easy score and snap, mold resistant sound damping drywall available. Part of the QuietRock® Sound Damping System, QuietRock® ES Mold Resistant delivers reliable acoustic performance at a low installed cost - saving time, labor, materials, and valuable floor space. The mold resistant treatment to the paper and core can contribute to a healthier indoor environment. QuietRock® ES Mold Resistant achieves the maximum score of 10 on the ASTM D3273 mold test, making it ideal for hospitals, schools, government projects and other mold sensitive applications.



QuietRock® ES Mold Resistant Benefits

- Mold resistant rating of 10 per ASTM D3273
- Ideal for mold-sensitive applications such as hospitals, schools, government, and basements projects
- Patented EZ-SNAP® technology - easier to snap compared to other sound reducing drywall products
- Achieves STC 55 with just one layer on one side of single steel stud construction
- QuietRock® ES is 1 hour fire rated, Type X - listed in more than 90 UL & ULC fire resistant assemblies
- Abrasion resistant paper with mold resistant treatment
- Same high acoustic performance as QuietRock® ES



Mold resistant, Type X, 5/8" sound damping gypsum panel without paper or metal in the core. Cuts and installs similar to standard gypsum panel products. QuietRock® ES Mold Resistant is recommended for mold sensitive applications such as schools, hospitals, and government projects.

Product Specifications:

Thickness: 5/8" (15.9mm), tapered edges
Width: 4' (1220mm)
Lengths: 8' (2438mm), 9' (2743mm), 10' (3048mm)
Weight: 2.6 lbs/ft²
ASTM Standards: C 473, E 84, E 90, E 119, D 3273
STC-rated Assemblies (per ASTM E90): 48-60
Fire-rated (ASTM E 119, UL263): 1 hour, Type X
Flame Spread: Class A
Mold Resistance (ASTM D3273): 10
Abuse Resistance ASTM C1629: Surface Abrasion: 2, Soft Body: 1, Hard Body: 2
Installation Standards: ASTM C 840; GA-214, GA-216

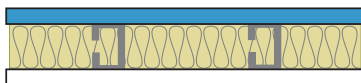
UL Assembly:  

Approved for use in many one and two hour fire-rated assemblies including U305, U309, U340, U341, U376, U386, U425, U465, V419, V463, V464, W313, W317, W459, and W460. Go to www.QuietRock.com for additional information. QuietRock® ES Mold Resistant can be incorporated in several one and two-hour fire-rated UL designs. However it is not intended as a direct substitute for a UL Classified Gypsum Board in all fire assemblies. Refer to the specific UL designs for assembly details.

Common Wall Assemblies:

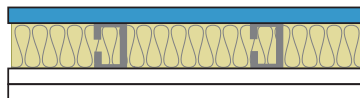
Light Gauge Steel Stud Walls

Single 3 5/8" Steel Stud Wall, 24" OC - **STC 52**



QuietRock® on one side,
Type X on the other

Single 3 5/8" Steel Stud Wall, 24" OC - **STC 58**



QuietRock® on one side,
2 layers 5/8" Type X on the other

Visit www.QuietRock.com for additional assembly and technical information

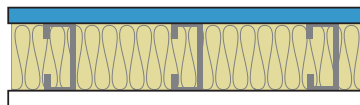
Heavy Gauge Steel Stud Walls

3-5/8" Single Steel Stud Wall, 16" OC - **STC 48**



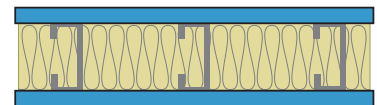
QuietRock® on both sides

6" Single Steel Stud Wall, 16" OC - **STC 49**



QuietRock® on one side,
Type X on the other

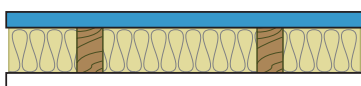
6" Single Steel Stud Wall, 16" OC - **STC 53**



QuietRock® on both sides

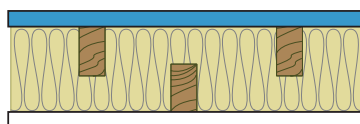
Wood Stud Walls

Single 2x4 wood studs, 24" OC - **STC 51**



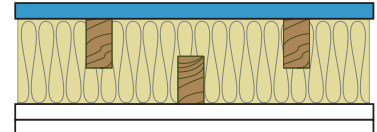
QuietRock® on one side,
Type X on the other

Staggered 2x4 wood studs, 8" OC - **STC 55**



QuietRock® on one side
Type X on the other

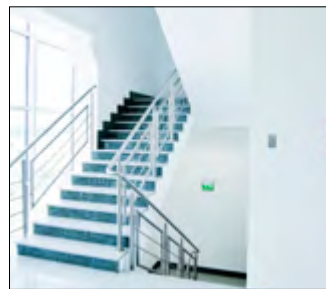
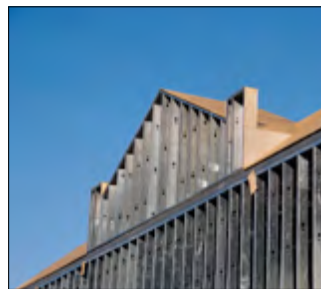
Staggered 2x4 wood studs, 8" OC - **STC 60**



QuietRock® on one side
2 layers 5/8" Type X on the other

The information contained in this document is for general purposes only. Features and specifications are subject to change. The diagrams and stated STC ratings are intended to serve as a guide. Construction practices have an influence on final STC ratings. PABCO® Gypsum cannot guarantee actual STC ratings. Flanking sound patterns, the integrity of the wall, and construction methods factor in effective sound control. Exposure to excessive or continuous moisture and extreme temperatures of 125°F (52°C) or more should be avoided. QuietRock® should be stored flat in a dry area, under cover, on supported risers to prevent damage to product. Proper care should be taken while transporting, storing, applying and maintaining QuietRock.

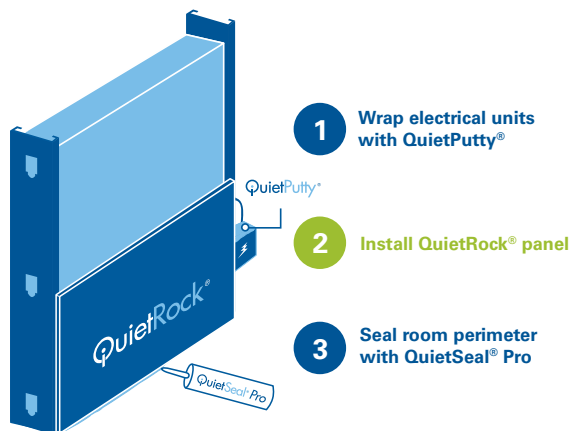
QuietRock® 530



Versatile **IMPACT RESISTANT** Sound Damping Gypsum Panel

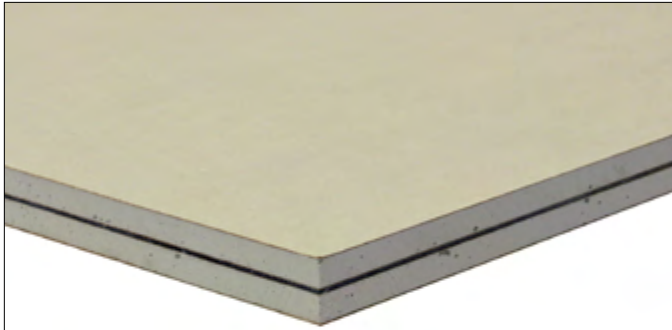
QuietRock® 530 is a versatile, high performance sound reducing panel that delivers superb noise reduction and impact resistance. This 'superpanel' is UL fire-rated, STC-rated, shear-rated, impact-resistant, and optionally RF shielded.

The Quiet® Sound Damping System in 3 easy steps:



QuietRock® 530 Benefits

- Delivers STC ratings of 52-74
- Fire rating equivalent to Type X drywall; UL fire-rated
- Shear-rated (average 487 lbs/ft)
- Hangs and finishes like standard drywall
- QuietRock® 530RF available for RF and noise shielding and tested in accordance with IEEE 2999-1097; Radio Frequency shield testing (standard 530 does not provide RF shielding)
- Continues to reduce noise even when fixtures are installed, such as shelves or lamps
- Can be used in load bearing and non-load bearing assemblies
- Tested in accordance with ASTM E 695-03; impact load testing
- Tested in accordance with article 4, section 27-335.1(2) and article 5, section 27-348E of the building code of the city of New York



QuietRock® 530 is a fire rated, 5/8" impact resistant sound damping gypsum panel equipped with a thin layer of steel in the center.

Product Specifications:

Thickness: 5/8" (15.9mm), tapered edges
Width: 4' (1220mm)
Lengths: 8' (2438mm), 9' (2743mm), 10' (3048mm), 12' (3658mm)
Weight: 3.3 lbs/sqft
STC-rated Assemblies (per ASTM E 90): 52-74
Fire-rated (per ASTM E 119): 1 hour
Flame Spread (per ASTM E 84): Class A
Permeability (per ASTM E 695-03): 0
Shear-rated (per ASTM E 2126): 487 lb/ft
Installation Standards: ASTM C 840; GA-214, GA-216

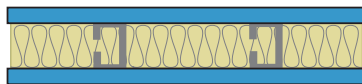
UL Assembly:

Approved for use in many one hour fire-rated assemblies including U309, U340, U341, U376, U386, V310, V463, V464, W313, W317, W459, and W460. Visit www.QuietRock.com for additional information on fire-rated assemblies. QuietRock® 530 can be incorporated in several UL designs. However it is not intended as a direct substitute for a UL Classified Gypsum Board in all fire assemblies. Refer to the specific UL designs for assembly details.

Common Wall Assemblies:

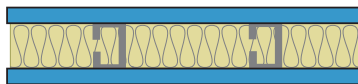
Light Gauge Steel Stud Walls

Single 3 5/8" Steel Stud Wall, 24" OC - **STC 53***



QuietRock® on both sides

Single 3 5/8" Steel Stud Wall, 24" OC - **STC 55**



QuietRock® on both sides

Visit www.QuietRock.com for additional assembly and technical information

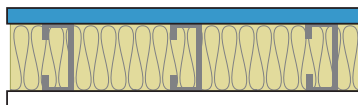
Heavy Gauge Steel Stud Walls

3-5/8" Single Steel Stud Wall, 16" OC - **STC 48***



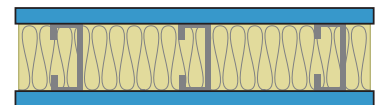
QuietRock® on both sides

6" Single Steel Stud Wall, 16" OC - **STC 49***



QuietRock® on one side
Type X on the other

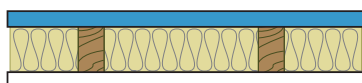
6" Single Steel Stud Wall, 16" OC - **STC 53***



QuietRock® on both sides

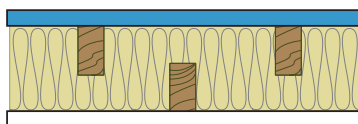
Wood Stud Walls

Single 2x4 wood studs, 24" OC - **STC 52**



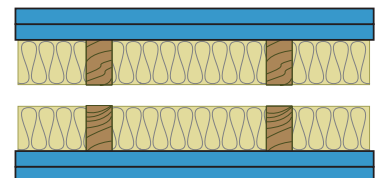
QuietRock® on one side,
Type X on the other

Staggered 2x4 wood studs, 8" OC - **STC 57***



QuietRock® on one side
Type X on the other

Double 2x4 wood studs, 24" OC - **STC 74**

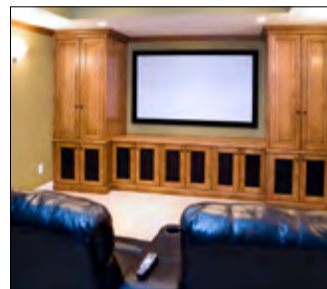
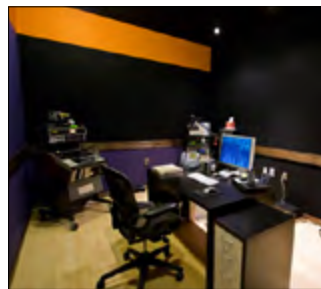
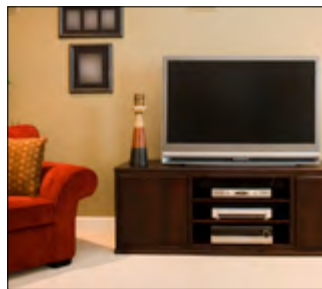


Double layer QuietRock® on both sides

* Estimated STC based on independent laboratory testing

The information contained in this document is for general purposes only. Features and specifications are subject to change. The diagrams and stated STC ratings are intended to serve as a guide. Construction practices have an influence on final STC ratings. Serious Energy cannot guarantee actual STC ratings. Flanking sound patterns, the integrity of the wall, and construction methods factor in effective sound control. Exposure to excessive or continuous moisture and extreme temperatures of 125°F (52°C) or more should be avoided. QuietRock should be stored flat in a dry area, under cover, on supported risers to prevent damage to product. Proper care should be taken while transporting, storing, applying and maintaining QuietRock.

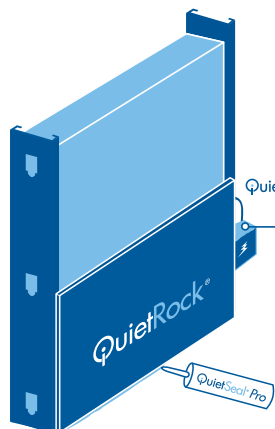
QuietRock® 545



The **HIGHEST PERFORMING** Sound Reducing Gypsum Panel on the Market

QuietRock® 545 is the only sound damping panel that is designed for maximum sound isolation across a broad frequency range. QuietRock® 545 is ideal for high-end home theaters, commercial theaters, professional studios, music rooms, and other projects where low-frequency mitigation is critical.

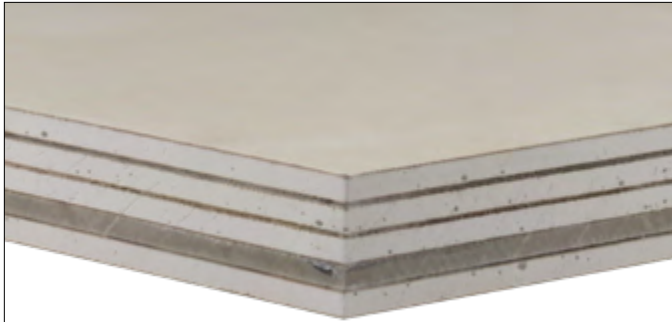
The Quiet® Sound Damping System in 3 easy steps:



- 1 Wrap electrical units with QuietPutty®
- 2 Install QuietRock® panel
- 3 Seal room perimeter with QuietSeal® Pro

QuietRock® 545 Benefits

- Highest performing sound damping drywall available
- Exceptional low-frequency performance
- Maximum sound isolation across a broad frequency range
- Ideal for high-end home theaters, studios, commercial theaters, and other sound rooms
- Lab tested and proven to outperform older conventional sound isolation methods
- Offers high STC ratings, tested up to STC 80



Multi-layer gypsum panel engineered to provide maximum sound attenuation across a broad frequency range. QuietRock® 545 can be used in any application where transmission loss performance is required at low frequencies - ideal for commercial theaters, home theaters, studios, and sound rooms.

STC Comparison*

1 layer 5/8" gypsum per side	42
6" CMU	45
2 layers 5/8" gypsum per side	49
1 layer QuietRock® 545 per side	60

**in single wood stud construction (single 2x4 24" OC)*

Product Specifications:

Thickness: 1-3/8" (34.9mm), tapered edge
Width: 4' (1220mm)
Lengths: 8' (2438mm)
Weight: 6.25 lbs/sqft

STC-rated Assemblies (per ASTM E 90): 60-80

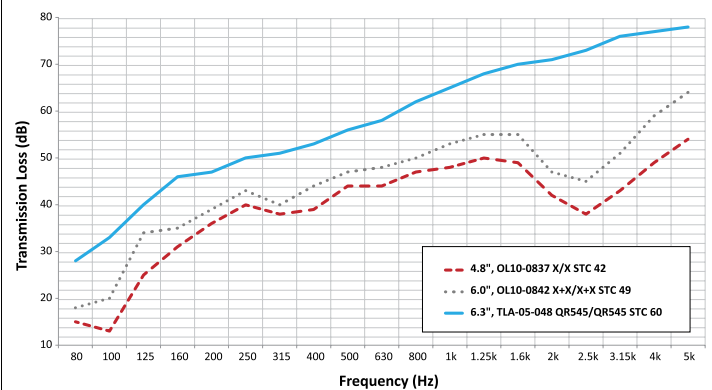
Permeability (per ASTM E 695-03): 0

Product Standards: ASTM C 1396

Installation Standards: ASTM C 840; GA-214, GA-216

UL Assembly: Approved for use in the following one or two hour fire-rated assemblies U411, U425, U465, W466.

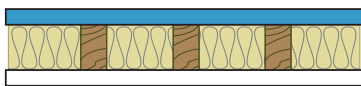
Single 2X4 Wood Studs 24OC, 5/8" Type X vs. QuietRock 545



Common Wall Assemblies:

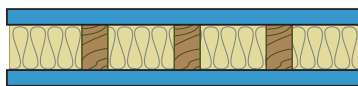
Wood Stud Walls

Single 2x4 wood studs, 16" OC - **STC 49**



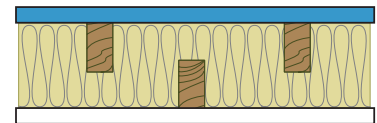
QuietRock® on one side
Type X on the other

Single 2x4 wood studs, 16" OC - **STC 54**



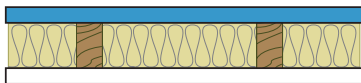
QuietRock® on both sides

Staggered 2x4 wood studs, 8" OC - **STC 64***



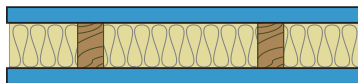
QuietRock® on one side
Type X on the other

Single 2x4 wood studs, 24" OC - **STC 56***



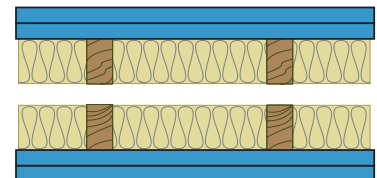
QuietRock® on one side,
Type X on the other

Single 2x4 wood studs, 24" OC - **STC 60**



QuietRock® on both sides

Double 2x4 wood studs, 24" OC - **STC 80**



Double layer QuietRock® on both sides

* Estimated STC based on independent laboratory testing

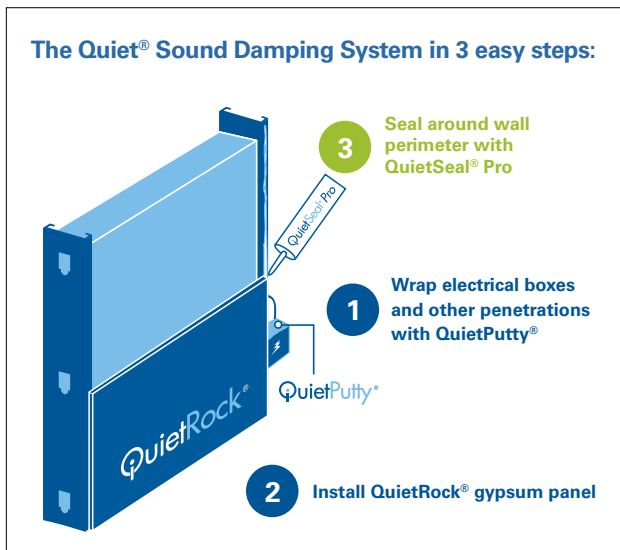
The information contained in this document is for general purposes only. Features and specifications are subject to change. The diagrams and stated STC ratings are intended to serve as a guide. Construction practices have an influence on final STC ratings. Serious Energy cannot guarantee actual STC ratings. Flanking sound patterns, the integrity of the wall, and construction methods factor in effective sound control. Exposure to excessive or continuous moisture and extreme temperatures of 125°F (52°C) or more should be avoided. QuietRock should be stored flat in a dry area, under cover, on supported risers to prevent damage to product. Proper care should be taken while transporting, storing, applying and maintaining QuietRock.



Easy application. Reliable. Low Cost Performance.

QuietSeal® Pro is a high performing, non-hardening acoustical sealant used to maintain optimum acoustic performance of the Quiet® Sound Damping System. QuietSeal® Pro stays soft to prevent cracking and reduce sound transmission. Apply QuietSeal® Pro around perimeters of the walls to prevent noise leaks in your assembly. It's easy to use and offers a hassle free clean up – just use soap and water. Choose QuietSeal® Pro for quick application, maximum performance, and reliable results when used as part of the Quiet® Sound Damping System.

The Quiet® Sound Damping System in 3 easy steps:



Visit www.QuietRock.com for installation instructions and complete architectural documentation.

QuietSeal® Pro Benefits:

- Optimizes damping performance of STC rated assemblies
- Easy application
- Hassle free clean up
- Stays soft for high acoustic performance
- Environmentally friendly: water-based, low VOC and low odor
- Exceeds ASTM C 834 standards

Product Specifications:

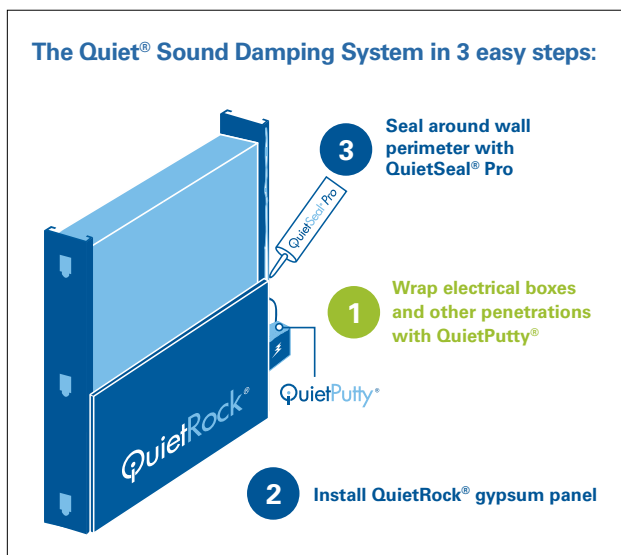
Model:	QuietSeal® Pro
Color:	Light Blue
Coverage:	88 linear feet for 1/4" bead
Weight:	3 lbs/tube
Storage temp:	40°-100°F
Volume shrinkage:	18.4%
VOC:	< 0.1 g/l voc

The information contained in this document is for general purposes only. Features and specifications are subject to change. Construction practices have an influence on final STC ratings. PABCO® Gypsum cannot guarantee actual STC ratings. Flanking sound patterns, the integrity of the wall, and construction methods factor in effective sound control. QuietSeal® Pro should be stored flat in a dry area to prevent damage to product.



EASY TO USE acoustical putty

QuietPutty® is a moldable putty designed to maintain the performance of acoustically rated walls with penetrations such as electrical outlets, HVAC ducts, water hookups and cables.* QuietPutty® is clean, easy to use and requires no tools. Use as part of the Quiet® Sound Damping System for reliable, low cost results.



QuietPutty Benefits

- Adheres to most construction materials for a high quality seal
- Asbestos free
- Provides a draft and cold smoke seal
- Minimal shrinkage and will not dry out
- Noncorrosive to metal and plastics

Product Specifications:

Thickness:	1/8" (3mm)
Width:	7" (178mm)
Length:	7" (178mm)
Weight:	7oz (198g) /pad
Color:	Blue/Green
Unit Size:	10 pads/box
Surface Burn:	(ASTM E84) Flame Spread 15, Smoke developed: 250, Classification: A

Visit www.QuietRock.com for installation instructions and complete architectural documentation

* Not recommended for use on penetrations with high temperature equipment or canned light canisters.

The information contained in this document is for general purposes only. Construction practices have an influence on final STC ratings. PABCO® Gypsum cannot guarantee actual STC ratings. Flanking sound patterns, the integrity of the wall, and construction methods factor in effective sound control. QuietPutty® should be stored flat in a dry area to prevent damage to product.



Anti-sound & vibration coating for cars, appliances, HVAC, and electronics

QuietCoat® 118 is a sprayable, viscoelastic polymer that reduces noise and vibration with minimum weight, bulk and cost. QuietCoat® is engineered specifically for coating nonporous materials including stainless steel, galvanized iron, aluminum and composite (reinforced plastic) materials.

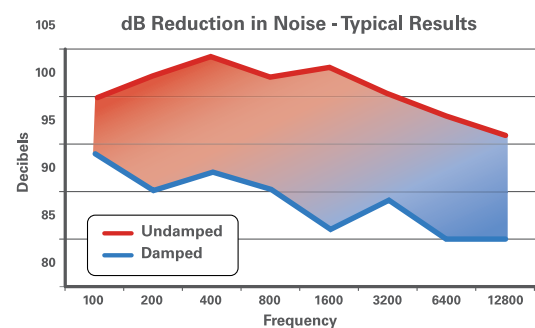
QuietCoat® Benefits:

- Typical noise reduction of 6dB to 20dB*
- Easily applied with brush, roller, air gun, or airless sprayer
- Ideal for most porous and nonporous metal surfaces - cars, studs, HVAC ducts, roofing, machinery, and appliances
- Fully ROHS compliant
- Fast-drying in under 20 minutes
- Easy cleanup, water-soluble
- Meets industry flammability standards
- Noise-damping results will continue to improve for 14 days
- Tested in accordance with ASTM E-756 vibration testing
- Tested in accordance with FMVSS302; burn resistance testing for materials used in occupant compartments of motor vehicles
- Environmentally friendly, lab tested
- Low VOC and low odor

Visit www.QuietRock.com for application instructions and complete architectural documentation.

Product Specifications:

Model:	QuietCoat® 118
Solid Content:	>77 wt%
Compliance:	Low VOC (<0.1 g/l)
Density:	Wet - 13 lbs/gal (1560 kg/m³) Dry - 8.5 lbs/g
Layer Thickness:	0.02" - 0.04"
Drying Time:	20 min
Curing Time:	72 hours
Coverage:	40 - 80 ft²/g
Storage temp:	40°-100°F - Do not freeze



*Depending on application. Application thickness and environment may influence noise reduction ratings. PABCO® Gypsum cannot guarantee actual noise reduction ratings. The information contained in this document is for general information purposes only.

QUIET WALLS DONE RIGHT

Exceed customer expectations and crush tight build schedules with QuietRock® Sound Reducing Drywall. Architects that specify QuietRock can achieve fire and Sound Transmission Class (STC) ratings in partitions using less material and less time. Thanks to QuietRock's unique combination of patented viscoelastic polymer and gypsum core technologies, it is possible to maximize STC performance without the need for multiple layers of drywall or resilient channel. Less waste, less time, saves floor space, easy to install and meets fire - specifying QuietRock by PABCO® Gypsum is a quiet wall done right.

Get help with your project, call 800.797.8159

Visit www.QuietRock.com/tools for up-to-date STC performance on many UL fire rated assemblies.

California Pacific Medical Center, San Francisco, CA: QuietRock EZ-SNAP® installation



Sound Reducing Drywall



GO BEYOND DRYWALL

WITH A PARTNER INVESTED IN YOUR SUCCESS

At PABCO® Gypsum, we take great **PRIDE** in our craft by supporting yours. Our **PASSION** goes beyond gypsum panels—we are dedicated to building trust. We build this **TRUST** by providing **EXPERT** advice, **SERVICE** and drywall **PERFORMANCE** you can count on. It's more than drywall—it's our way of doing business.

YOU ROCK THE WORLD, WE MAKE IT EASY.

QuietRock®
by PABCO® Gypsum

QuietRock® acoustical products:
800.797.8159
www.QuietRock.com

 **PABCO® Gypsum**
what the job demands®

PABCO® Gypsum technical services:
866.282.9298
www.PABCOgypsum.com

