

Project:
Mountain House High School

Location:
Mountain House, California

Architectural Firm:
Nichols, Melburg & Rossetto

General Contractor:
Turner Construction

Drywall Contractor:
Tarlton and Son

Products:
FLAME CURB®
MOLD CURB® Plus
PABCORE® Shaftliner
PABCO® GLASS Sheathing

New High School Reflects Town Rebound & Growth

First-ever Mountain House High School campus is brought to life by Nichols, Melburg & Rossetto, Tarlton and Son and PABCO® Gypsum to symbolize a California community's resurgence

Mountain House, CA

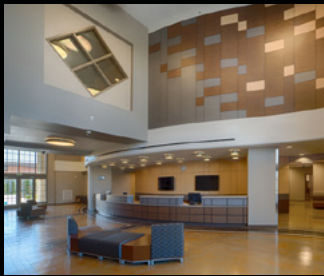
For about 450 freshmen and sophomores in the Lammersville, California Unified School District, Mountain House High School introduces a new era in secondary education. For the 12,000-plus residents of this San Joaquin County municipality east of San Francisco, it represents much more.

Despite the national economic downturn and negative media coverage in 2008, the optimistic residents of Mountain House insisted on securing the future of their community through expansion - which continues to pave a path to recovery today. The level of established infrastructure also attracts home buyers and businesses, helping Mountain House rebound to become the full-fledged city that planners envisioned.





Just opened and now teeming with 400-450 underclassmen, the two-story classroom and administration building anchors the first-ever secondary school campus of the Lammersville, CA, Unified School District in Mountain House, CA.



The striking main lobby showcases a curvilinear look, acoustical tile block-outs and other inviting aspects designed into Mountain House High School using a variety of PABCO Gypsum products.



Curvilinear soffits add dynamic dimension and visual flow when traversing Mountain House High School hallways.

Unification of the Lammersville School District, approved by voters in 2010, paved the way for this centerpiece of its revitalization. The ground breaking for a five-building campus designed by Nichols, Melburg & Rossetto of Redding, CA, took place in 2012. NMR Associate Principal Wesley King, who spearheaded the Mountain House project, reports initial construction included:

- A two-story classroom and administration building
- A multi-use building with cafeteria, kitchen, and a stage for school events
- A gymnasium building with two gyms, wrestling and weight rooms, and locker rooms

The 2014-2015 school year began in August and a larger two-story classroom facility will be ready for 2015-2016, when the student population will essentially double. The campus is designed to accommodate up to 2,000 students and is technology laden; each student receives a laptop with which to study and submit homework.

PABCO® distribution flexibility helps contractor deliver on schedule

Starting in March 2013, the task of bringing to life the first home of the Mountain House Mustangs was in the hands of Fresno-based Tarlton & Son, Inc. "Once the foundation and structural steel are in place, we're usually the driving force on a project," says Marty Chaney, Vice President of Project Management. "As soon as we get the wall framing up, plumbers and electricians and HVAC people can do what they need."

About 500,000sq. ft. of PABCO® Gypsum products from ABC Supply Co. Inc. in Ceres were delivered over the next year, including 400,000 sq. ft. of PABCO FLAME CURB® Type X drywall, 80,000 sq. ft. of PABCO GLASS® Exterior Sheathing, and additional amounts of PABCORE® Shaftliner and PABCO MOLD CURB® Plus.

PABCO Gypsum Field Representative Russell (Rusty) Riley points out that in locales such as Mountain House outside major metro areas, the company's distributor network and delivery flexibility are especially helpful.

"For this project, some deliveries from our Las Vegas plant went directly to the site and were off-loaded by the distributor. Other material went to the distributor's location, for incidental shipments as needed. This dual capability enabled the distribution yard and the contractor to stay on schedule and complete the project in a timely manner."

Products needed to meet specs and codes, ensure long-term performance

As for the products themselves, NMR's King notes that "PABCO is in our spec as an acceptable gypsum product manufacturer." Tarlton made a Substitute Request and, although NMR has used these products before, this is the first time King can recall the project being 100% PABCO.

One newly specified product, PABCO GLASS® SHEATHING, boasts a proprietary formula-treated gypsum core that is fire-, mold- and water-resistant, and is reinforced with glass fibers. It meets or exceeds ASTM C1177, and achieves the highest water- and mold-resistance score possible when tested in accordance with ASTM D3273. Not surprisingly, it has gained popularity since being introduced a few years ago.

King adds that specialty products such as PABCO GLASS® Exterior Sheathing (no paper inside or outside) and FLAME CURB® are often required for projects such as Mountain House. "Schools have more stringent regulations than some other types of commercial construction. And health issues – resistance to moisture and mold – are another reason why we've moved away from paper materials."

Longevity is also a key consideration. "Unlike a rental property where remodeling often is done when someone new moves in, we may not modernize a school for 30 or more years, so we watch the longevity of materials we use."

PABCO's consistency boosts contractor confidence to meet strict deadline

With school district unification agreements requiring classes for 2014-2015, staying on schedule was critical. A good reason to use PABCO, says Chaney. "For over 10 years now, I don't recall when we have ever had issues with their board." Previously with other brands, he reveals, delamination and blisters have occurred; 'do-overs' eat precious hours and "we don't have the luxury of time due to the aggressive construction schedules."

About 20 Tarlton workers persevered, cutting-in PABCO FLAME CURB® Type X board around beams and jogs in walls to ensure fire ratings were maintained. That was the easy part.

"A lot of artistic work went into the curvilinear soffits," notes NMR's King. "It's hard to get curves that don't have flat spots."

Here's where consistent quality plays a role. Produced in PABCO's international award-winning state-of-the-industry Las Vegas plant, stringent production parameters and double-edged quality assurance processes (defect prevention) coupled with quality control procedures (defect detection) help to ensure problem-free installation continuity on any job site. Another plus is that FLAME CURB® board facing is highly suitable for any finish.

"The soffits were a challenge," Chaney concurs. "So were the serpentine-like waves down the corridors. Certain areas had block-outs for acoustical tile, and the rest was painted. Our drywall hangers and tapers did a really nice job."

King and Chaney are complimentary of each other's work. "It's a beautiful project. The architect did a really great job," observes Chaney. Says King: "The contractor did a good job with the gypsum to make the curvilinear ceilings come out nicely. I'm very pleased with the finish and the overall look of the project. On a scale of 1 to 10, it's an 11."

About Tarlton and Son

Family owned Construction business specializing in lath, plaster, drywall, scaffold, metal studs, and EIFS; Tarlton and Son, Inc. is a service labor company that is vertically integrated allowing them to take on an entire job. Tarlton and Son, Inc. goes where the work is and the main geographical work radius from the Fresno office is about 200 miles from Bakersfield to Stockton. In 2000 a second office opened in Arroyo Grande to accommodate several large contracts that had been awarded in the coastal region. That office also covers about 200 miles, from Ventura to Monterey.

About Nichols, Melburg & Rossetto Architects

Now in our 47th year, Northern California-based Nichols, Melburg & Rossetto Architects (NMR) is a comprehensive architecture, structural engineering and interior design firm with offices in Redding, Chico and Sacramento. NMR is one of the region's leading firms for education, healthcare, civic, commercial and custom residential projects. The firm is known for creating award winning projects that are dictated solely by the requirements and goals of our clients, taking into account the site, prospective inhabitants and their usability needs and sustainability initiatives.

About PABCO® Gypsum

A leading manufacturer of wallboard in the U.S. since 1972, PABCO® Gypsum is a division of PABCO® Building Products LLC, one of several subsidiaries that make up the Pacific Coast Building Products family of companies, serving customers coast-to-coast. PABCO® Gypsum's complete range of products incorporates numerous proprietary and/or patented fire, water, and mold resistant technologies. Since 2013, QuietRock®, the first and most technically advanced sound reducing drywall and accessories, is also part of the PABCO® family. PABCO® Gypsum plants in Newark, CA and Las Vegas, NV have combined capability to manufacture over 1.65 billion square feet of board annually. For more information, visit www.PABCOgypsum.com.



A must-open deadline kept Tarlton & Son workers hustling from March, 2013 until completed.



The open entry area in Mountain House High School's gymnasium lobby continues curvilinear ceiling, lighting and other touches designed into campus facilities.



The new Mountain House High School symbolizes forward-thinking spirit and used PABCO Gypsum drywall products.